



# The HARTFORD HISTORICAL SOCIETY

☒ HARTFORD, VERMONT 05047 ☒

*Hartford • Quebec • West Hartford • White River Junction • Wilder*

Volume X, Issue II • SOCIETY NEWSLETTER • May, 1997

## Our May Meeting:

At 6 PM

We hope to see all of you at our annual, or business meeting, 14TH May, 1997 which will feature a pot-luck supper. Everyone bring your favorite dish as well as your own place setting and silverware! The Officers and Board will be elected, and a variety of issues will be discussed including changes in by-laws. So please come prepared to vote.



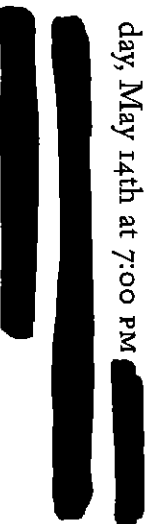
As MENTIONED at our last meeting, our dues structure is proposed to be moved from our by-laws and put into *committee*, chosen by, or made up of, our board of directors. A proposed change in our by-laws will also be voted upon, namely the : "By laws changed...Changed to 9 member Board..." will be changed to "*the board of the Hartford Historical Society shall consist of 9 directors and 4 officers.*"

## WANTED:

By OUR ARCHIVISTS: *Hartford Alumni Newsletters* volumes 1, 2, 4, 7, 8, 13, 22—*through*—the present.

## Representatives Of The Real Estate Profession To Present Discussion At Garipay House.

*Local Real Estate professionals* will present a discussion relative to older homes in the area at the next meeting of the Hartford Society on Wednesday, May 14th at 7:00 PM



Topics will include lead paint regulations and their significance for historic preservation.

**A Silent Auction**  
WEDNESDAY, 14 MAY  
A silent auction will be held at our annual meeting. Items will be on display before and during the pot-luck supper. Winners will be determined at the business meeting.  
Come Early!



## Draft Description of Our House from the Hartford Village

### Historic District:

From our files comes this draft from "Hartford Village Historic District, Braley-Garipay House, 187 Hartford Main Street," p. 15, 15 March, 1997:

Constructed in 1915, the Braley-Garipay House is a two-story, Foursquare structure clad in asbestos siding and capped by a slate hip roof. The off center entrance is marked by a low pediment supported by paired Roman Doric columns resting on a shingled base and is fronted by concrete steps. A single story porch, also featuring Roman Doric columns, spans the façade and the east elevation. The shingle bases are spanned by stick balusters. The front door contains a glass and panel door flanked by full sidelights. The first floor double-hung windows have a small upper sash over a larger bottom sash. On the second story there are smaller 1/1 windows; an individual window is over the entrance with a paired window adjacent. Simple shelf lintels cap the windows which are flanked by shutters.

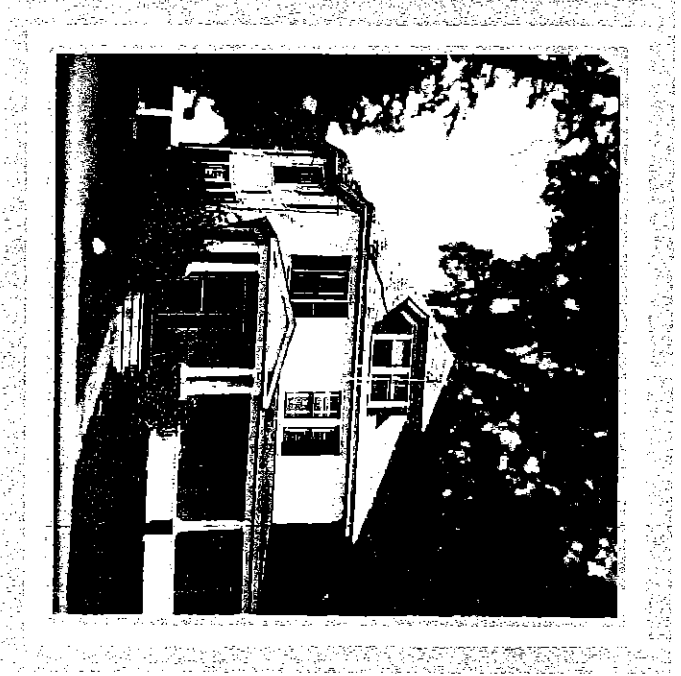
Projecting from the east elevation is a two-story, three sided window capped by a hip roof and resting on a brick foundation. A rear porch on the east side is supported by Roman Doric columns.

...The driveway on the west side of the house leads to a two-car garage capped by a steeply pitched gable roof. This house appears to have been built by William Braley on land which he purchased from Franklin Lawrence in 1915. Braley operated the post office and an undertaking business in the village for many years. Braley continued to own this residence until 1924 when it was sold to Helen Meecha and Carrie Mould. The property was sold to Stanley Garipay in 1938. Loretta Garipay bequeathed the property to the Hartford Historical Society in 1989.



The HARTFORD HISTORICAL SOCIETY

☒ BOX 547 HARTFORD, VERMONT 05047 ☒



### ☒ SOME RECENT ACQUISITIONS:

- ☞ Photograph of Woody's Dairy Drive In, Taft Flat, 1940; Photo of Guarino's Market, &c.; 1887 Survey of Wilder (Olcott Falls) by Levi Hazen (photocopy); *from the Town of Hartford*
- ☞ Postcards of White River Junction Flood Scene and Book by Walter H. Crockett, *Vermont—Its Resources and Opportunities*, 1916, 122 pages, black and white photos, *courtesy Bob Follasbee*.
- ☞ Photograph of Charles and Mira Davis, and a photo of Charles on a stick pin, *courtesy Richard Seward*
- ☞ A Hand drawn map dating from about 1800 showing land owners around the area of the river in Queeche Village, *from Morgan Adams*.
- ☞ Photo of Hartford Village; "Magic Candies in Beautiful Boxes," a transcription of a Radio Household Institute broadcast in six typed pages; color postcard of White River Junction, aerial view; and Wm. Tally House (restaurant) memorabilia, *courtesy Fred Bradley*.
- ☞ Raymond Trainor memorial article (photocopy), *courtesy Roy Black*