

HARTFORD HISTORICAL SOCIETY

The Garipay House
1461 Maple Street
Hartford Villlage, Ver,mont

•Hartford •Quechee •West Hartford
•White River Junction •Wilder

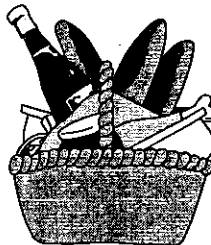
Vol. 11, No. 3

SOCIETY NEWSLETTER

September 1998

NEXT MEETING

A second pot luck!—this one to feature Italian food. Our program committee has put together a panel of our neighbors to discuss the Italian settlements in White River Junction. Many who came to work on the railroad early in this century, stayed to branch out into every walk of life. Today their descendants are merchants, lawyers, businessmen of every sort. Evelyn Stevens and her committee have signed up panelists: Marion Levesque, Raffaele Terino and Ralph Falzarano. They can be counted upon to share their memories of growing up as Italian-Vermonters in Hartford. Any one with similar memories to share is invited to call Evelyn at 295-2253. The panel will be followed by an audience participation session. Such discussions at prior meetings have proven most lively and informative, so bring your own recollections on this subject—we would like to hear from you.



The meeting will be
Pot luck (Italian dishes preferred) 6:00 PM
Wednesday, September 9, Program to follow ca. 7:00 PM
at the Greater Hartford United Church of Christ,
Route 14, Hartford Village.



Hartford Historical Society

Officers 1998-1999

Chairman: Bob Durkee
President: Herb Adams
Vice President: Dot Jones
Treasurer: Peggy McDerment
Secretary: David Ford

Board of Directors:

Fred Bradley, Bob Follensbee, Betty Mills, terms expire 2001
Bob Durkee, Alice Hazen, Evelyn Stevens, terms expire 2000
Roy Black, Jeanette Gould, Norman Lyman, terms expire 1999

Volunteer Staff

Archivist: Pat Stark
Curator: Priscilla Gadzinski
Correspondence and Membership Secretary: Betty Mills
Facilities Coordinator: Pat Stark
Program Coordinator: Evelyn Stevens
Newsletter Editor: Kathy Wendling



*Ken and Jean LaPlant
Ken was our guest speaker in May*

At our Annual Meeting May 13, 1998

Ken and Jean LaPlant were introduced by Evelyn Stevens. Mr. LaPlant spoke first of the 251 Club which began in 1954 as a consequence of an article in *Vermont Life*, "so that Vermonters could know more of their beloved State." There are now over 4,000 members whose goal is to visit the 251 towns and cities in this state. He named the 9 cities and the unorganized towns: Averill, Lewis, Ferdinand, Glastonbury and Somerset. The *Wayfarer* is the Club's organ, and comes to members upon payment of an exorbi-

tant one-time fee of \$2.50 and annual dues of \$3.50. Five year memberships are currently available for \$13.00. Qualifications for membership are the love of Vermont, and an enjoyment in getting out and seeing people. Members become a *Plus member* upon getting to all 251 towns. There are no affidavits or certificates necessary to prove *Plus Membership*. The Club is run on the honor system. "You'd only be fooling yourself, if you cheat."

Mr. LaPlant then offered a *boiled down* history of our town, keeping his talk to 4 pages of text. He spoke of early families: Hazen, Tilden, Burch, Marsh and Dr. Samuel Wells, the demonstrator of nitrous oxide as a pain-killer. He also mentioned log drives, farming, early saw and grist mills.

The first railroad train traveled from White River Jet. to Bethel in 1846. The Quechee Gorge bridge was one of the feats of engineering in its time. Samuel Nutt built the Junction House in White River Jet., where the Coolidge is now. (*See p. 8.*)

Beloved "Old 494" was exhibited in the "World of Steam" at the New York World's Fair of 1939. He retold the story of the Hartford Railroad disaster of 5 February 1887 that began on the trestle known as the Woodstock bridge when the rear cars of a train moving less than 12 miles an hour derailed. The coupling of the smoking car broke, saving the rest of the train from plunging onto the frozen river many feet below. All this on a night when temperatures were 18 degrees below zero.

P.T. Barnum's circus, and Buffalo Bill's *Congress of Rough Riders* drew crowds of upwards of 10,000 people on the old Fair Grounds in town.

D.W. Griffith filmed *Way Down East* in town using ice breaking up on the White River.

Thus, Mr. LaPlant concluded a brief, but interesting series of highlights of our town's history.

—David Fairbanks Ford

Annual Meeting: 13 May 1998

The Annual Meeting called to order by Herb Adams at 7:40 pm.

The minutes of the last meeting were read and approved.

Slates for the next years officers were read, additions called for and none offered. The secretary proposed a vote for the slate as read; unanimous approval. Our new officers are: Herb Adams, President, Dot Jones, Vice President, Peggy McDerment, Treasurer, and David Ford, Secretary.

New directors are Bob Follansbee and Norman Lyman.

Peggy McDerment distributed the treasurers report; income for the year: \$7,811.00; expenses: \$4,420.00; balance as of Dec. 31 1997: \$104,412.00.

Pat Stark presented her archivist report and spoke of her new work room, the volunteer opportunities for indexing, etc. Our open houses have been interesting, and culminated in a beautiful Christmas tea, with tree.

Evelyn Stevens circulated a survey listing several potential speakers for future programs. She also reported on a proposed plaque program, in conjunction with the homeowners of town, that would install historic markers on older homes and buildings. Letters will be sent to homeowners in all historic districts in town.

Pat displayed the recently acquired Masonic ballot box, featuring white and black marbles; hence the figure of speech, "black-balled." The silent auction was concluded and netted some extra income for the budget of the Hartford Historical Society.

The Meeting was adjourned at 8:00 pm. See you all at our next annual meeting, May of 1999 —or in the meantime, at the September meeting.



*Cordially submitted,
David Fairbanks Ford, Secretary.*

ONGOING EXHIBIT

If you haven't visited our current exhibit on *the Bridges of Hartford*, you've missed an interesting piece of our past. Photos of our bridges when they were wood, as well as more recent versions, highlight this exhibit. One of our Historic bridges has been in the news: the site of one of the first covered bridges in this part of the state, the current structure, on the National Register as a prime example of a bridge built after the 1927 flood, is scheduled to be demolished. Come visit us on the first Tuesday evening and first Saturday afternoon of the month.

VOLUNTEER OPPORTUNITIES



SEPTEMBER 21 - the Dartmouth Freshman Class will be once again volunteering their time & energy to help out non-profits. If you would like to work with these energetic and interesting folks by instructing them in simple tasks such as cleaning & yard work for a few hours on Monday afternoon, please contact Jeanette Gould [295-5537]



JANUARY - we have been given an old—partially hand made—loom which we hope to put together this winter for exhibit in 1999. If you have an interest in either assisting in assembly of this artifact, or in assisting in creating an exhibit around it, please contact any of the Board of Directors or Pat Stark [295-9353 x232 (work).]



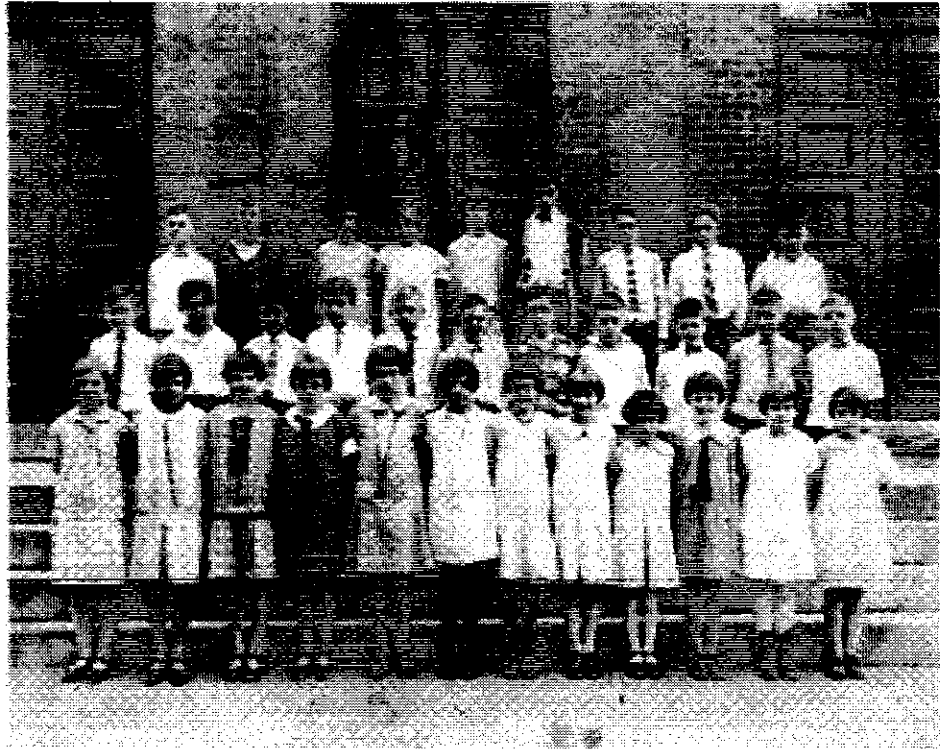
YOU PICK THE TIME

•[A] we have a few "odd jobs" around the House for a handy-man [or woman] —such as installing a rail, putting windows, etc.

•[B] we are always looking for someone to help the Archival volunteers with simple tasks such as indexing periodicals, doing photocopying [at the Municipal Building], labeling photographs, etc. If you are interested in helping with any of these tasks [or others YOU might think of] contact Pat Stark.



Mystery Photo



Where is this school with its three handsome doors? The Society has several pictures taken in front of the mystery doors. Can you guess when it was taken by the clothes the students are wearing? What can you tell us about this photo. Contact Pat Stark if you can identify the school or the children.

MEMBERSHIP REPORT
as of 7/31/98

Commercial Institutional	2
Individual Members	36
Family Members	2x 25 = 50
Senior Members	45
Senior Family Members	2x 26 = 52
TOTAL MEMBERS	185

WELCOME NEW MEMBERS

January 1 to July 31, 1998

Margaret "Peggy" Fraser of Wilder
Dan, Carol & Josh Hardy of WRJ
Stan & Wilma Johnson of WRJ
Norman & Winona Lyman of WRJ
Janice Spydell of WRJ

The larger the Membership, the more the Society will be able to accomplish. Tell your friends and relations, near and far and see the Hartford Historical Society grow.

The Garipay House holds an Open House 1:30 to 4:00 the first Saturday of the month, and 6:00 to 8:00 the first Tuesday of the month. Come see the displays and sit and reminisce with friends and neighbors.

GENEALOGY WORKSHOP REPORT

The Workshop has grown to 22 active members. Some have donated reference books from their personal collections, resulting in a small but growing Genealogy Library.

Come join us. We meet twice a month: a morning meeting the second Tuesday from 10 to noon, and an evening meeting the third Wednesday from 6 to 8 pm.

You have already missed a field trip to the New Hampshire State Library in Concord and to the Baker Library at Dartmouth College. In addition, we were invited to the Gates Memorial Library in White River where Librarian Bernadette Du Tremble introduced us to what is available for genealogists on the internet.

You are welcome to attend a Genealogy Workshop meeting any time.

THE HARTFORD HISTORICAL
SOCIETY

At The Garipay House
1461 Maple Street (Route 14)*
Hartford Village, Vermont

1999 Application & Renewal Form

Type of Membership (please circle):

Individual \$15 per year
Family (same address) \$20 per year
Senior \$10 per year
Senior Family (same address) \$15 per year
Commercial/Institutional \$25 per year
Special Gift of Support \$

Name _____

Additional Names (Family Memberships)

Mailing Address _____

Telephone _____

Comments/Questions _____

* 911 Address

DUES COVER ONE YEAR'S MEMBERSHIP.

Your newsletter label will give the date
your dues are due.

Please send this form and your check to:

Hartford Historical Society
Attn: Treasurer
P.O. Box 547
Hartford, Vermont 05047-0547



JUNCTION HOUSE,
White River Junction Vt.
Opposite Union Station. Accommodates 300.
Central Location.
Special Rates to Association or Society Meetings and Banquets.
Six miles from the wonderful
Quebec Gulf, and on direct line
between New York, Boston and
White Mountains and Montreal.
Recently rebuilt, modern in all
its appointments, good livery con-
nected. Write for terms and cir-
culars.
GIBBS & WHEELER, - - Proprietors.

HIGHLIGHTS OF SUMMER DONATIONS

Auctioneer banner and Alma's passport and name pins: **Fred Bradley**

Documents from the WWI record of aviator Clifford Gregory: **Eleanor Kyle**

Glycerine bottles from Howard Drug Co. and Allen Hall Co.: **Dolores Cook**

Police and state inspector badges of Clifford Gregory: **Eleanor Kyle**

Postcards of Smith & Sons and the WRJct Depot: **Nancy Theriault**

Wooden loom (in 31 pieces) from Ruth Bugbee estate: **Gloria Perkins**

At left: Ad for the Junction House from the Inter-State Journal Feb. 1902

The Hartford Historical Society
PO Box 547
Hartford, VT 05047

Non-Profit
Organization
U. S. Postage Paid
Hartford, VT
Permit No. 15