

***The Woodstock Railway, Dewey's
Mills, and Quechee***

***Northern New England Chapter
Society for Industrial Archeology
Spring Tour***

***June 20, 2015
Frank J. Barrett, Jr.***

The Woodstock Railway

A Few Important dates

October 30, 1863

Organized as the Woodstock Railroad Company

September 2, 1875

The 13.88 Mile Long Railroad Opened

July 1, 1890

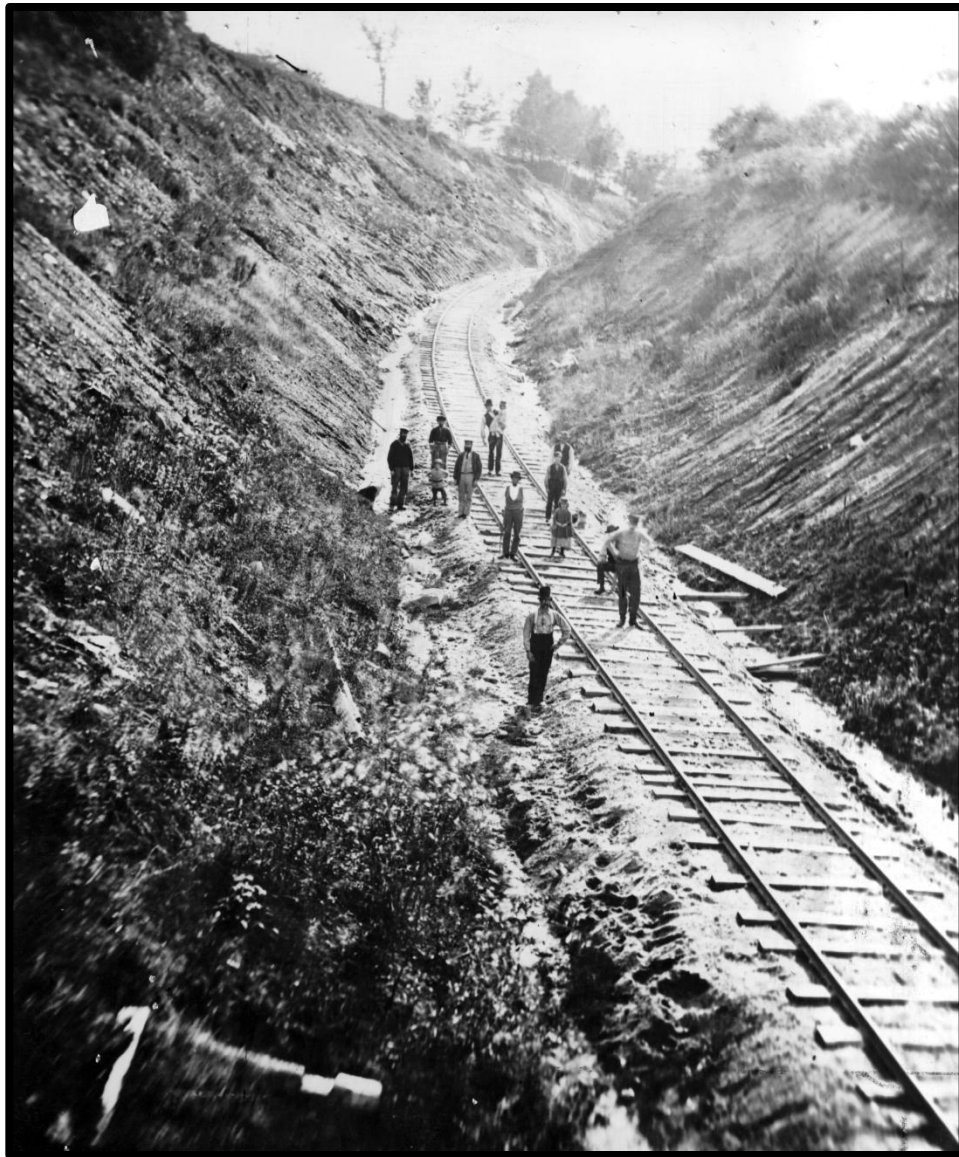
Re-organized as the Woodstock Railway

April 15, 1933

Saturday 11:00 Morning – The last Run



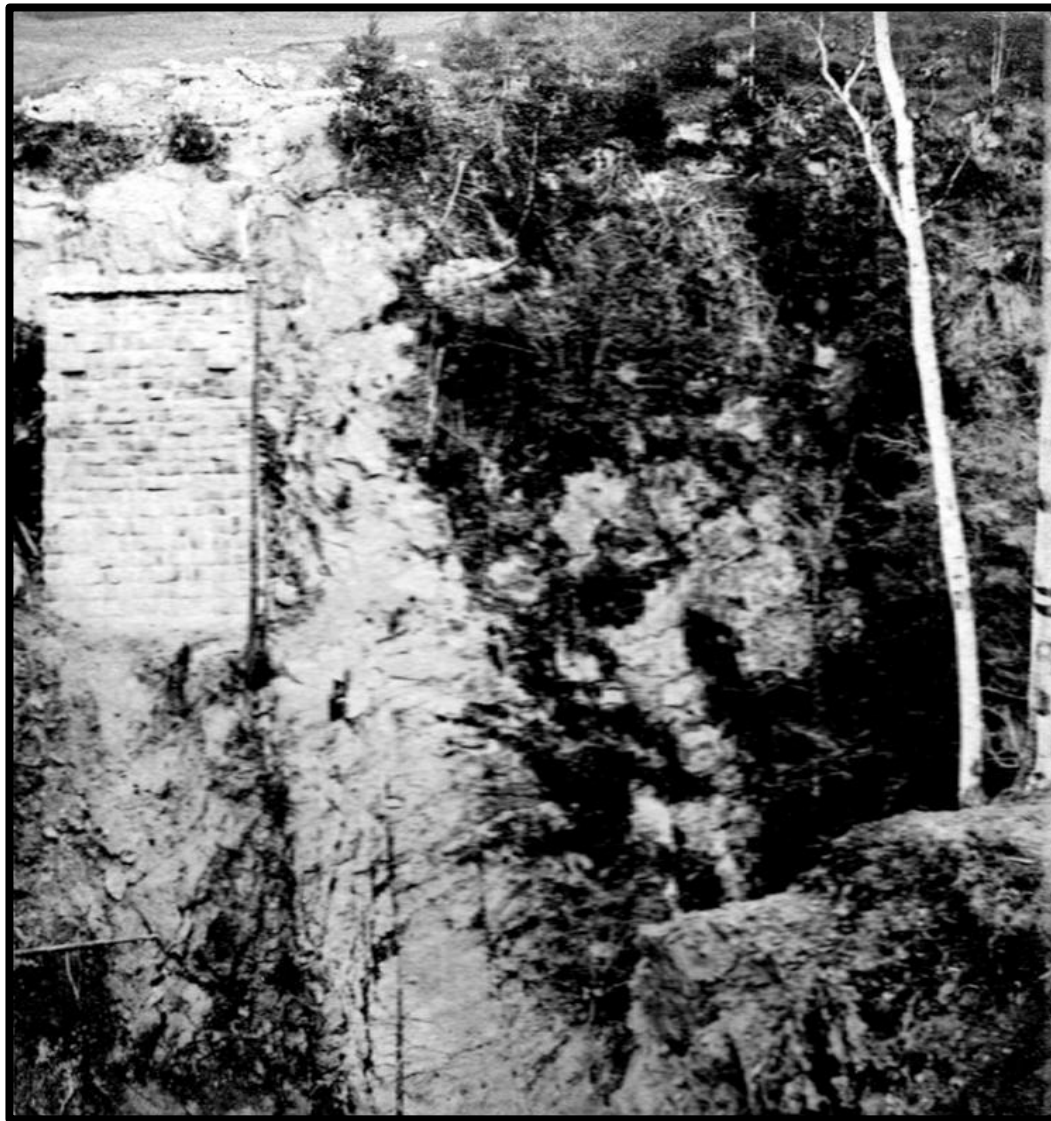
***Hurricane Hill and the Woodstock Railway
East bound train circa 1920
Present day US Route 4 at I-89 looking west***



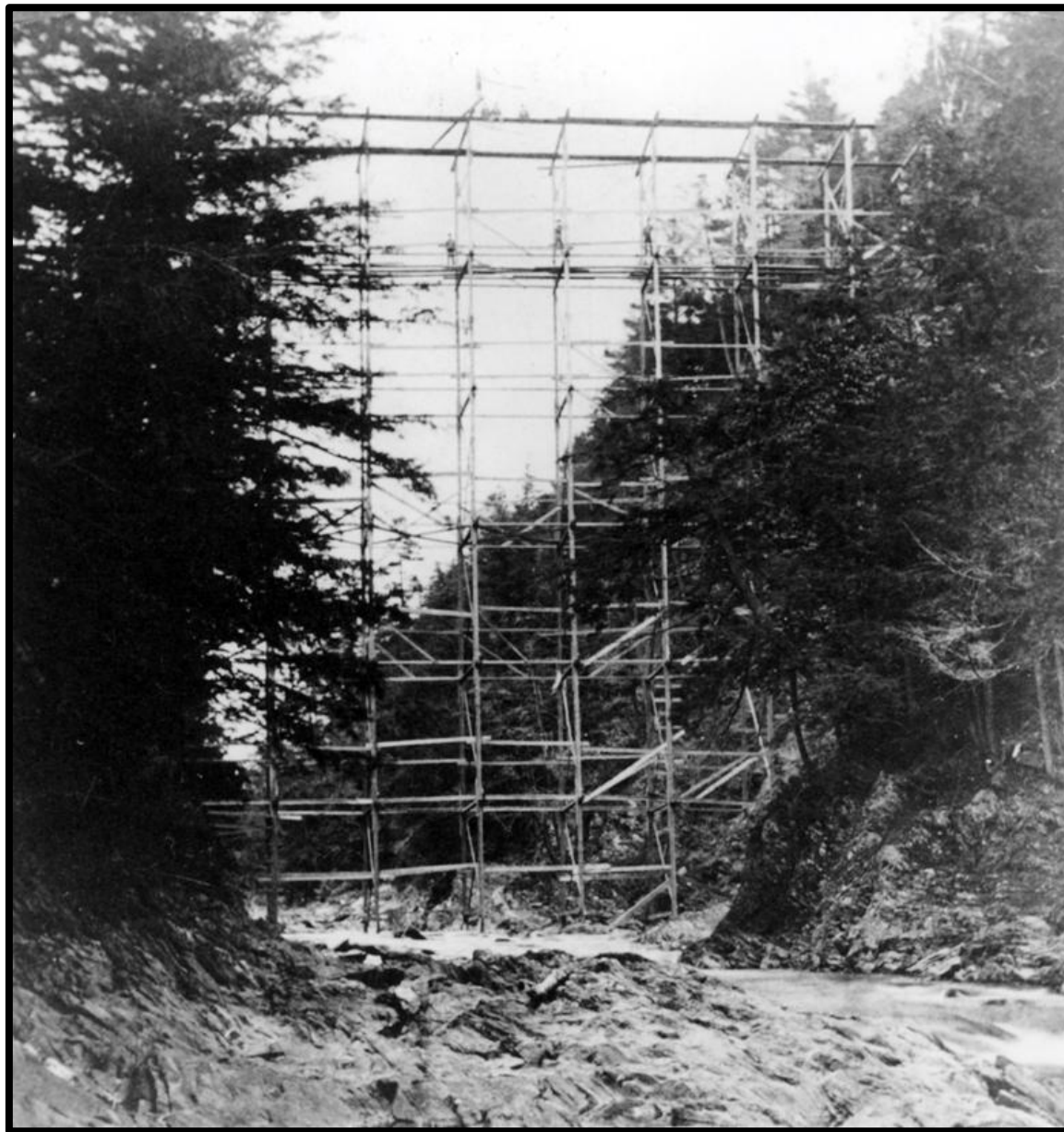
“Shallies Hill Cut”

Hartford, Vermont in 1875

Looking West - Present day US Route 4

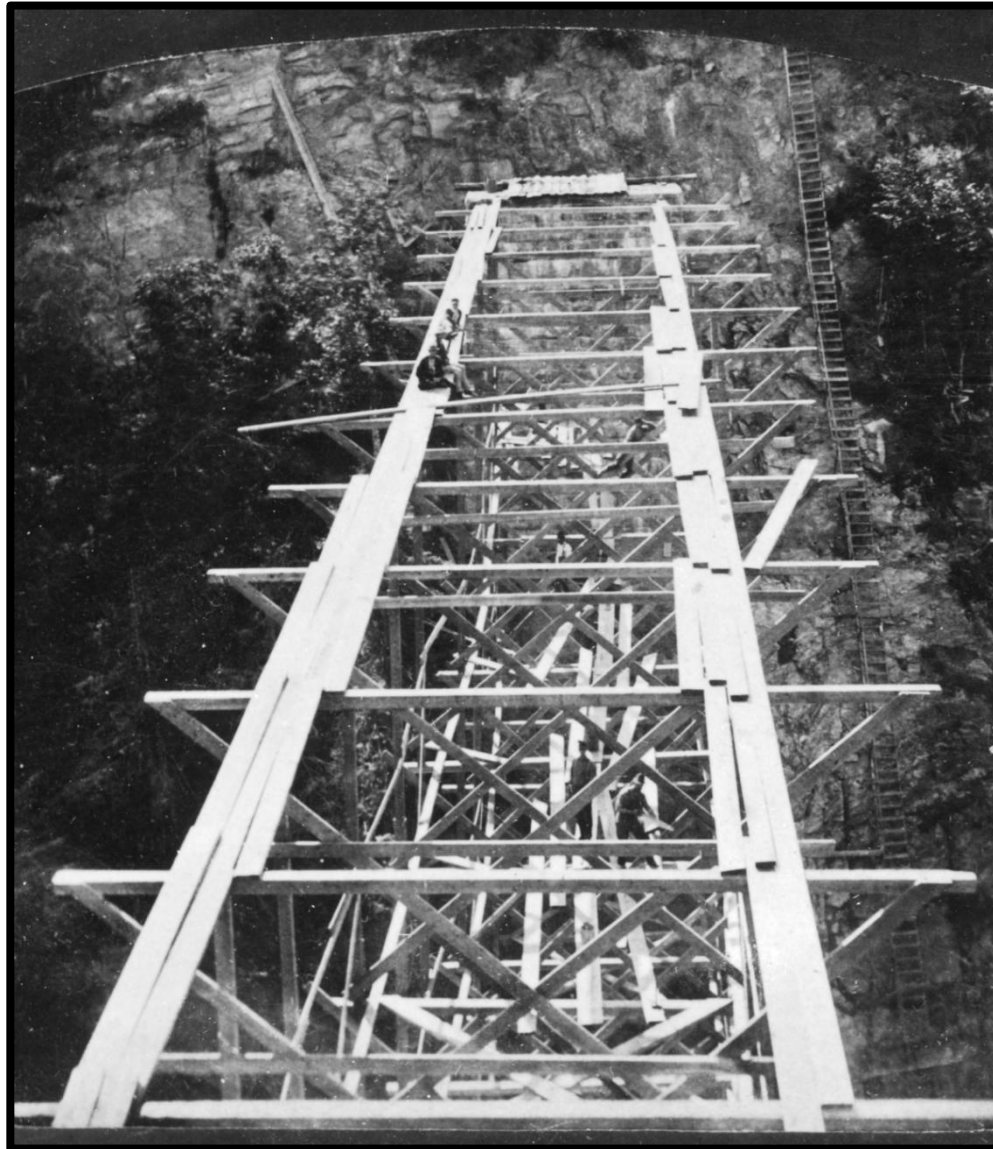


***Construction on the side of Quechee Gorge
Building Stone bridge abutments
June 1875***



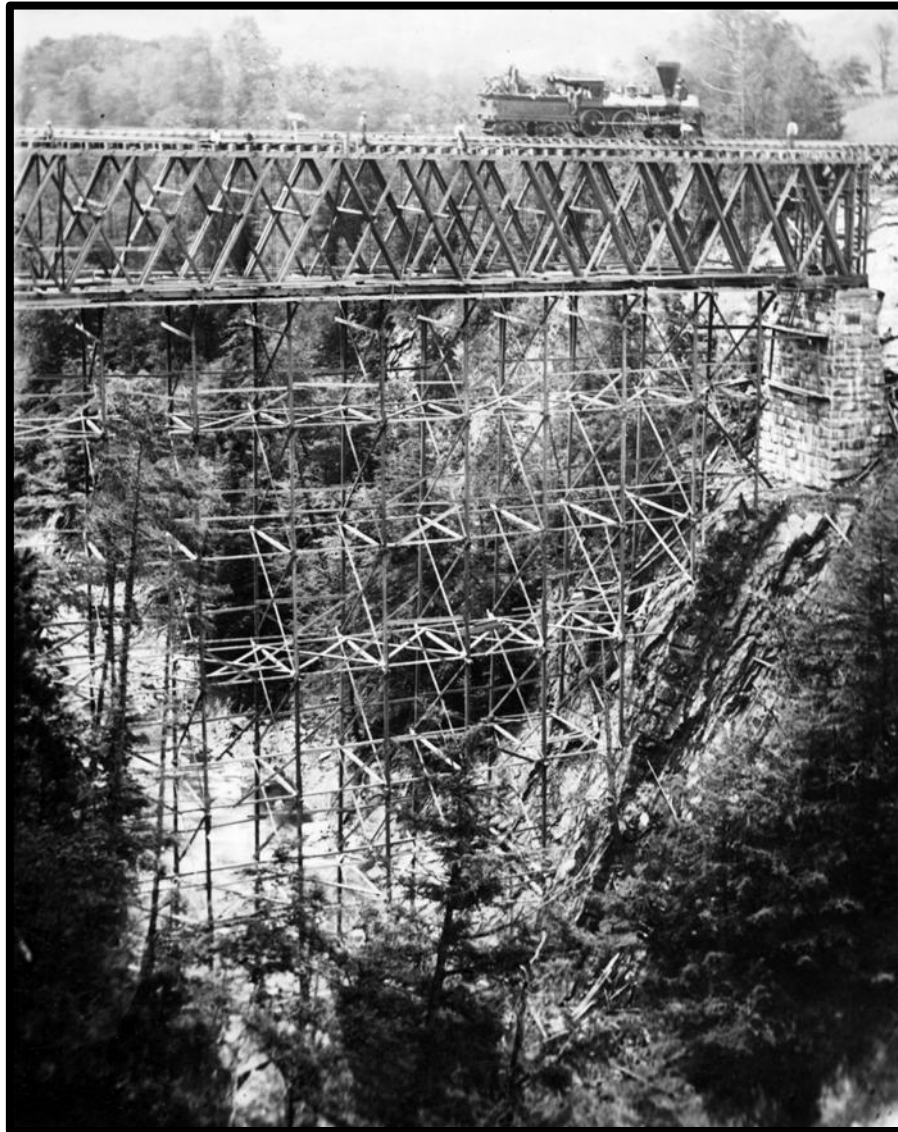
Quechee Gorge Bridge

Temporary scaffolding to support assembling the bridge

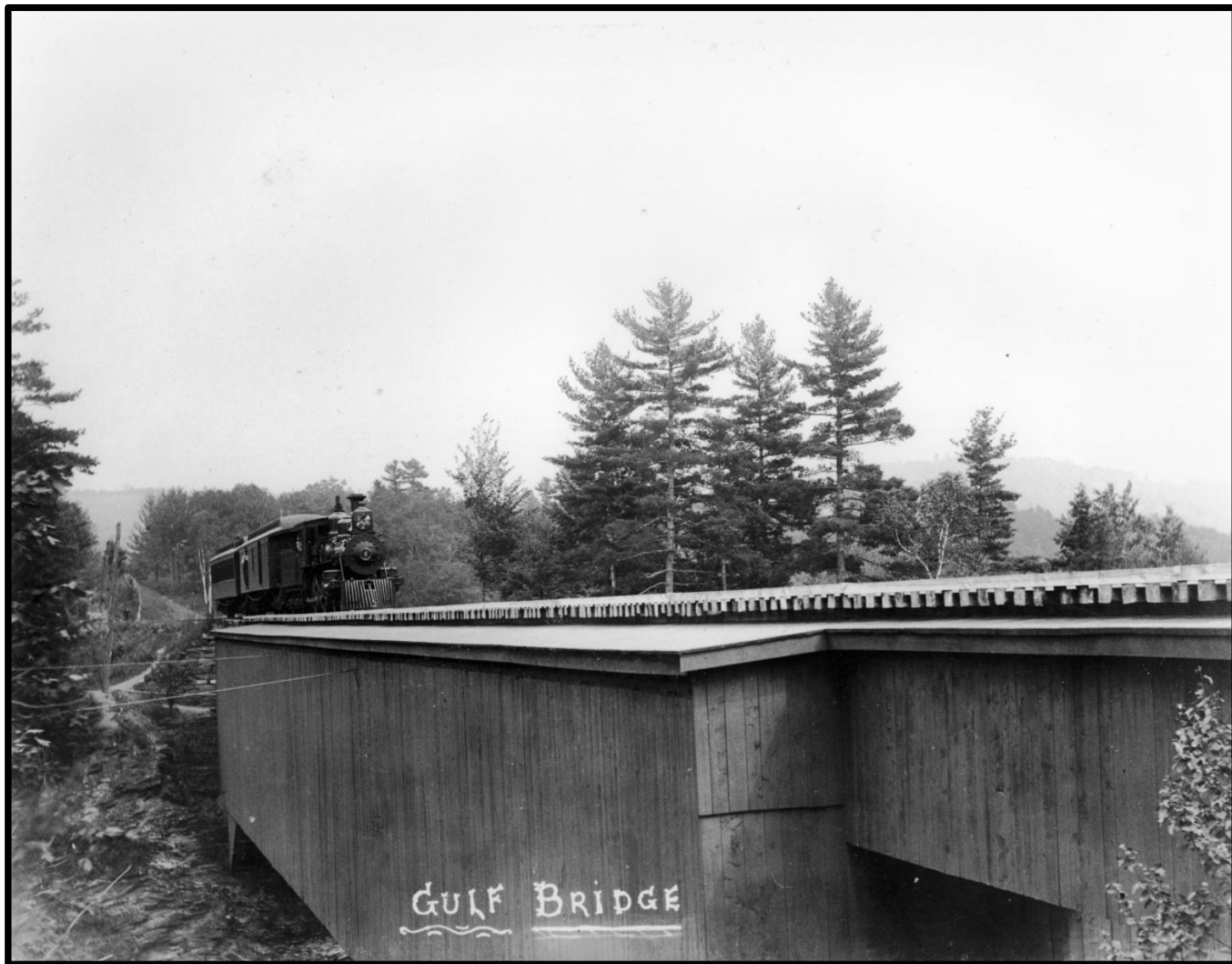


Quechee Gorge Bridge

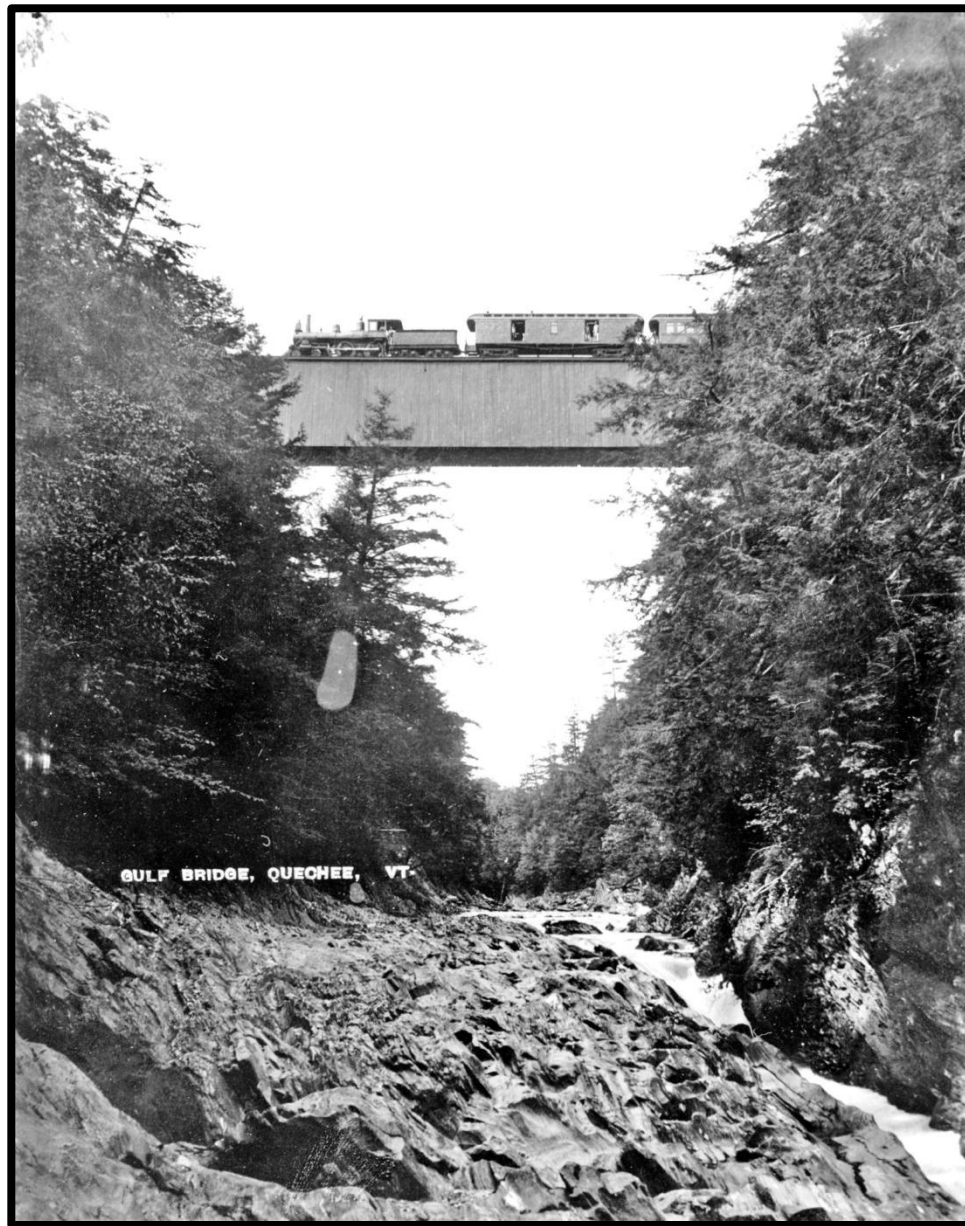
Preparing the temporary scaffolding to assemble the bridge trusses



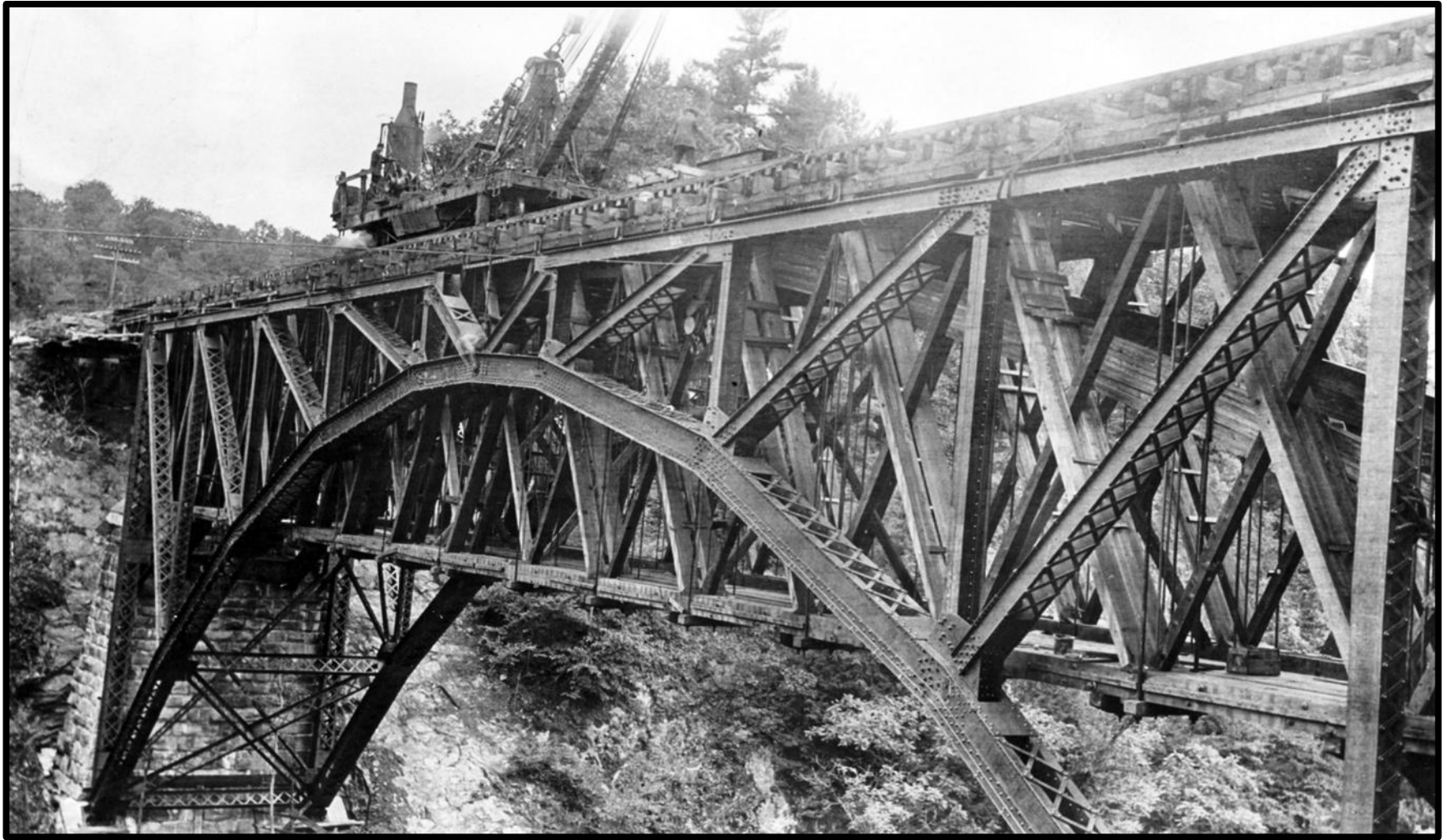
***The “Winooski” Testing the Quechee Gulf Bridge - August 12, 1875
Total construction cost in 1875 was \$28,000.
The bridge was of a Howe Truss type of Design***



***The Completed Quechee Gulf Bridge
Approaching the bridge is the A. G. Dewey westbound towards
Quechee***



***The Quechee Gorge Bridge
280 feet long and 163 feet above the Ottauguechee River***

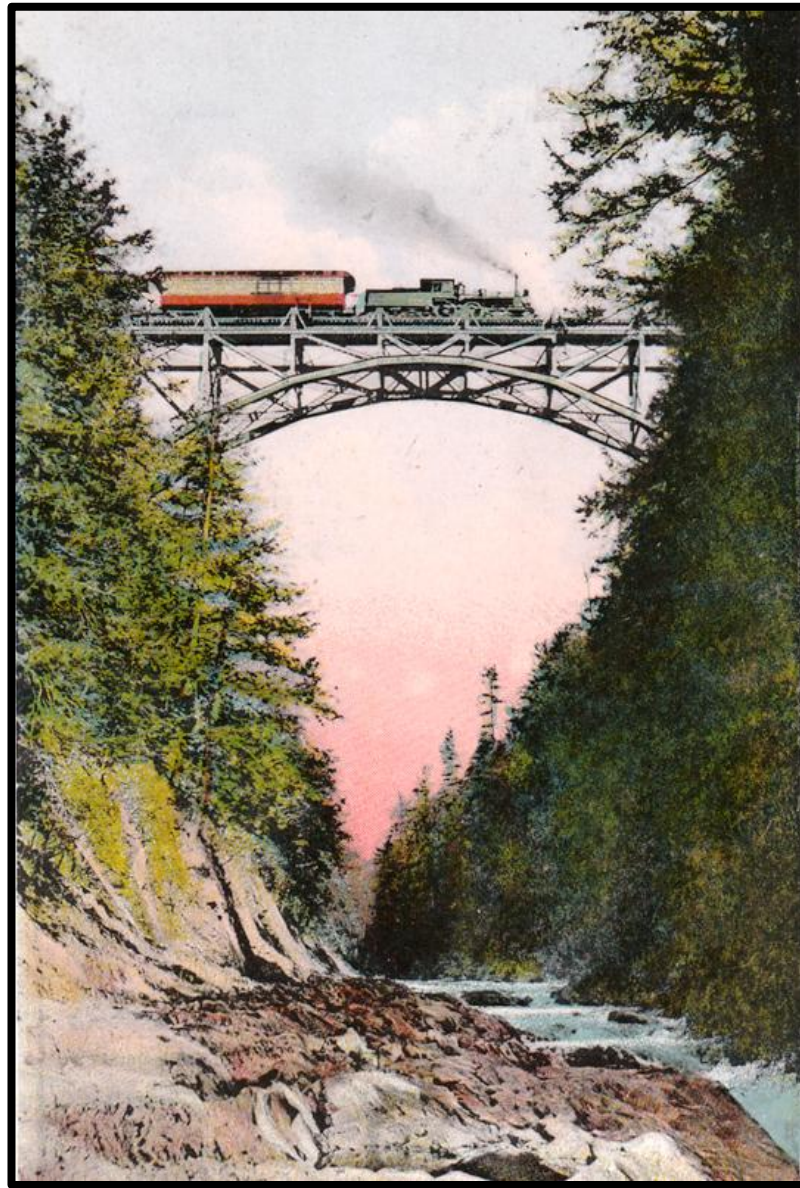


***Replacing the Woodstock Railway Quechee Gorge Bridge with steel in the
Summer of 1911***

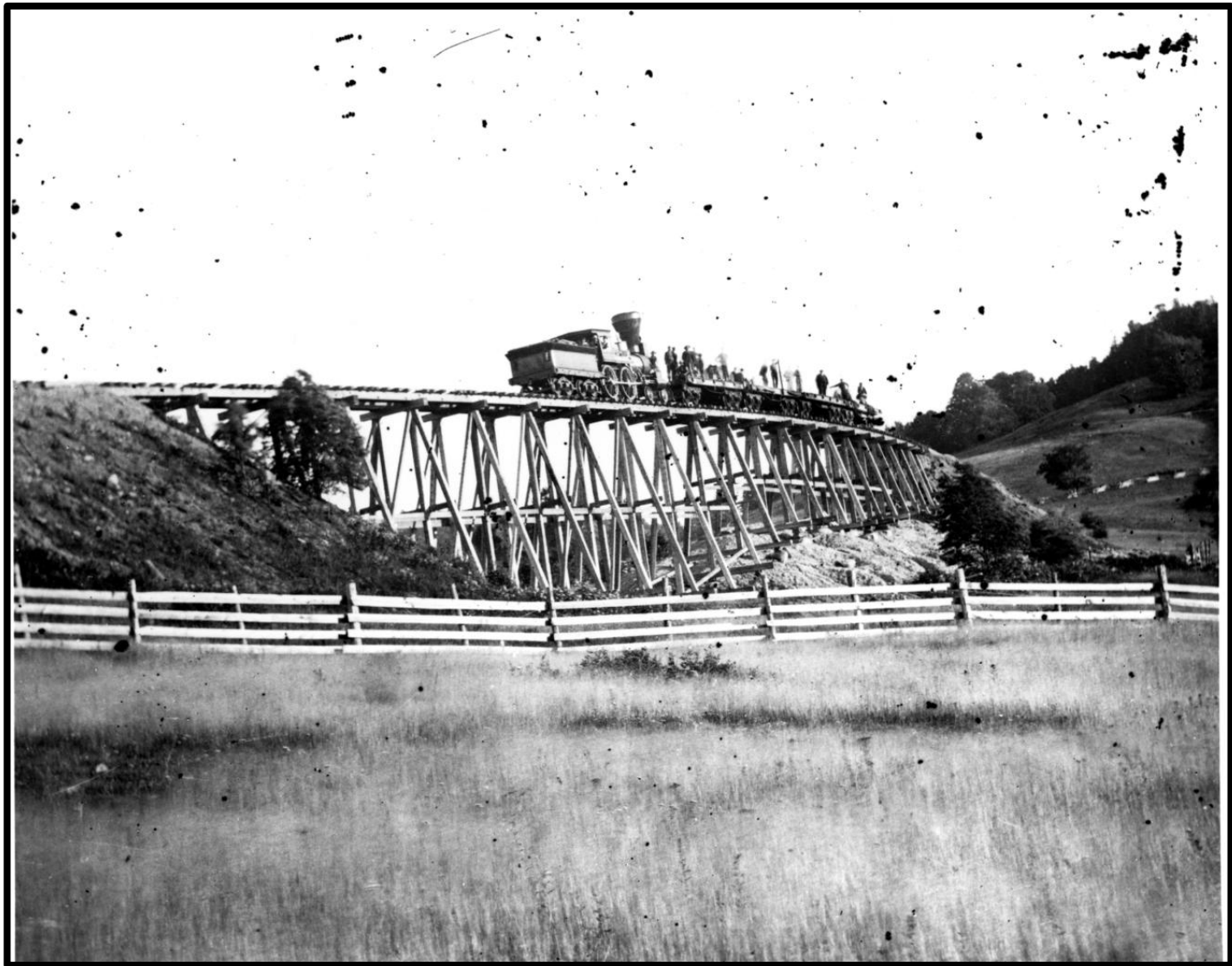
***Built by the American Bridge Company of Coraopolis, PA
Cost approximately \$26,000***



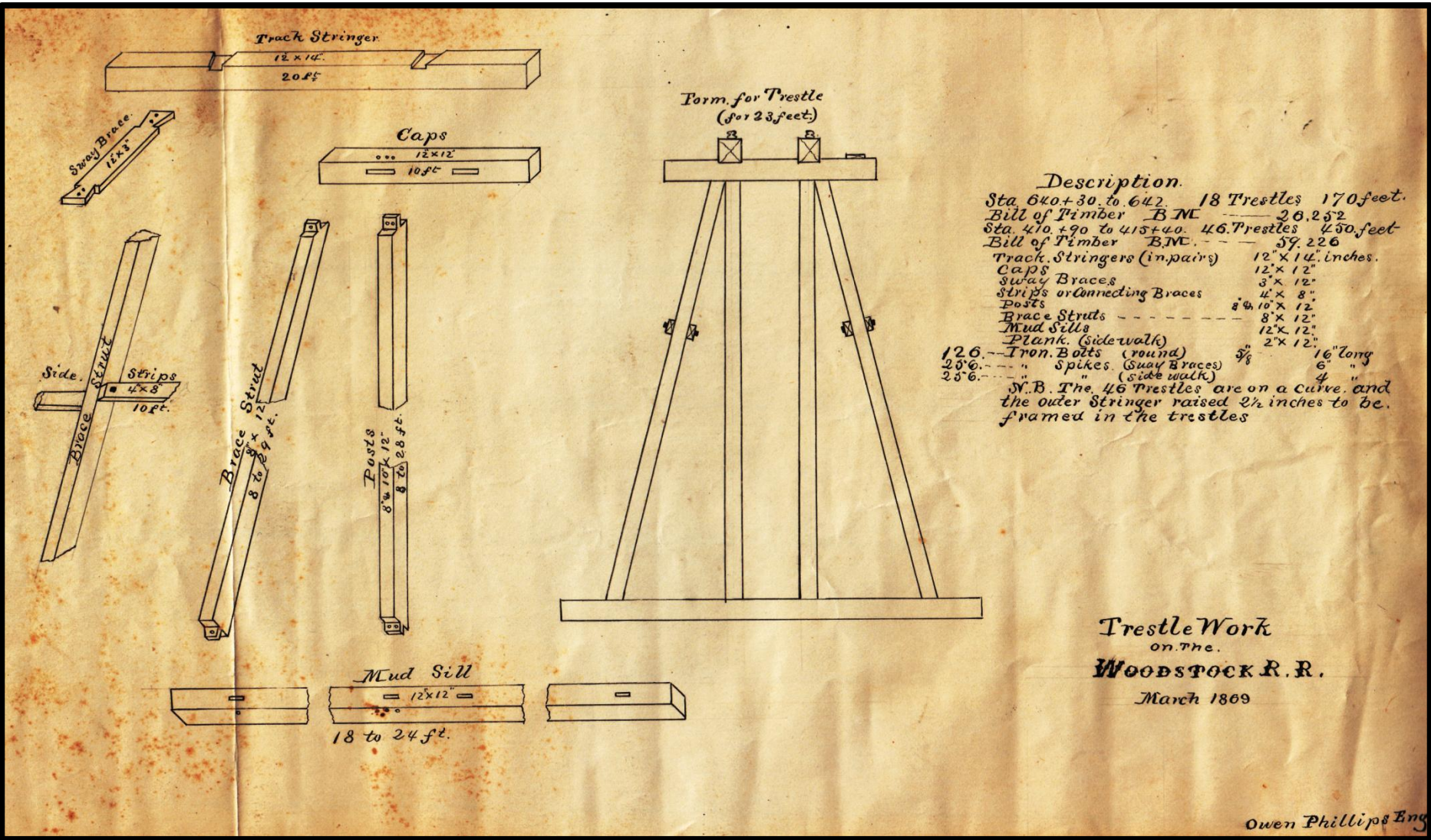
***The completed Quechee Gorge Bridge
Finished in the Fall of 1911
(Now US Route 4 highway bridge)***



***The replacement steel railroad bridge
Erected in 1911***



***The “Winooski” with a work train doing
trestle filling on the Woodstock Railroad in 1875
Present day site of US Route 4 immediately West of I-89***



**Engineer's drawing of a temporary trestle.
Woodstock Railway
March 1869**



A. G. Dewey

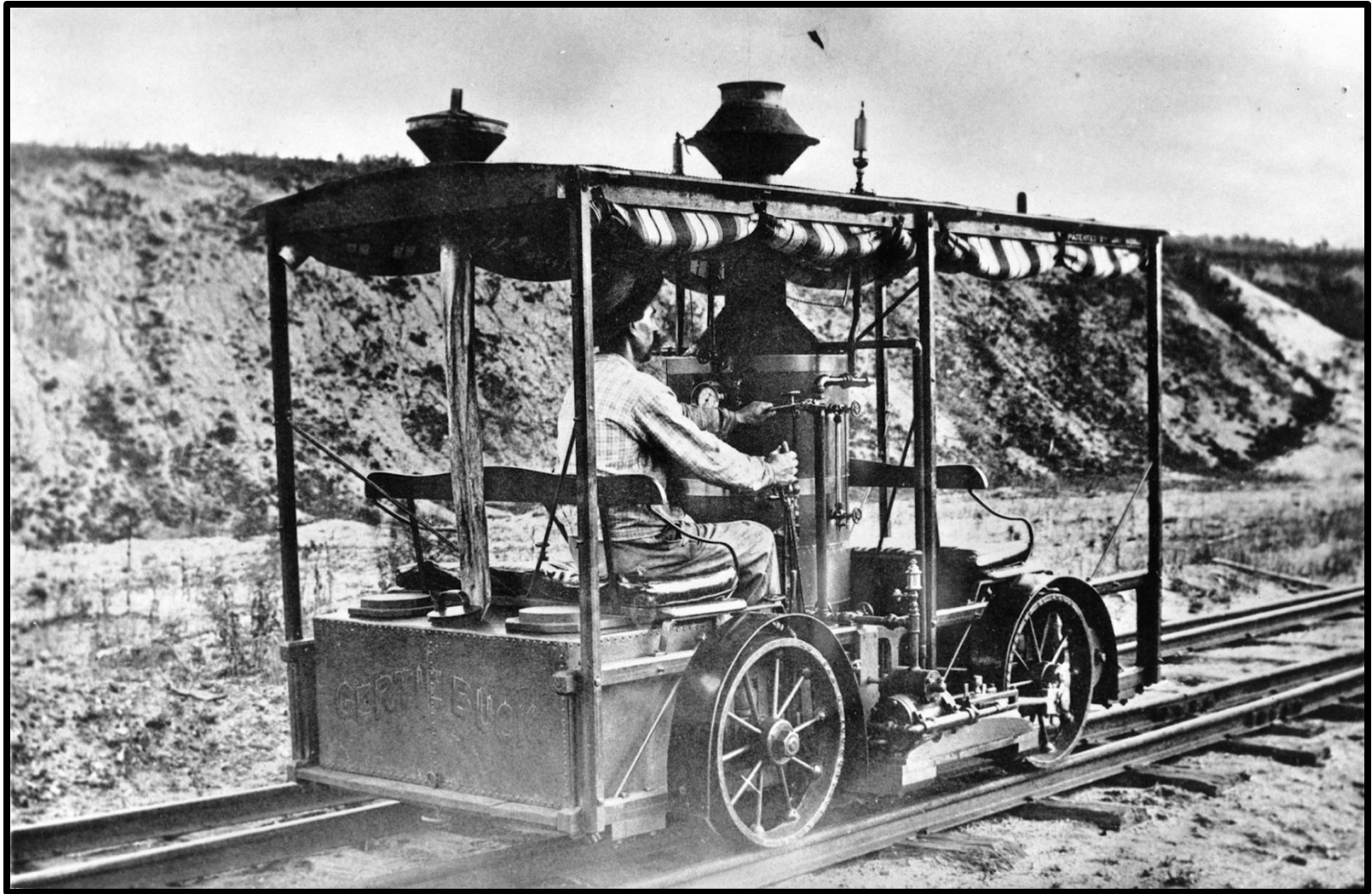
Purchased by the Woodstock Railroad in 1882

Built by the Rhode Island Locomotive Company in 1872

A fine example of a type 4-4-0 "American" locomotive



***Combination Coach and Baggage Car
Woodstock
Woodstock Railroad 1876***



The Gerty Buck

***A Steam powered inspection car owned by the Dewey Family
As it looked when it was first built in 1878***



The "Gerty Buck"

As it appeared circa 1890 after some modifications



***The J. C. Porter #3 eastbound at the Quechee station
1920***



***The Station at Quechee, Vermont
Looking West Circa 1920***

Quechee, Vt.

to Taftsville

to Dewey's Mills

1. Passenger Depot
2. Cattle Shed
3. Section House

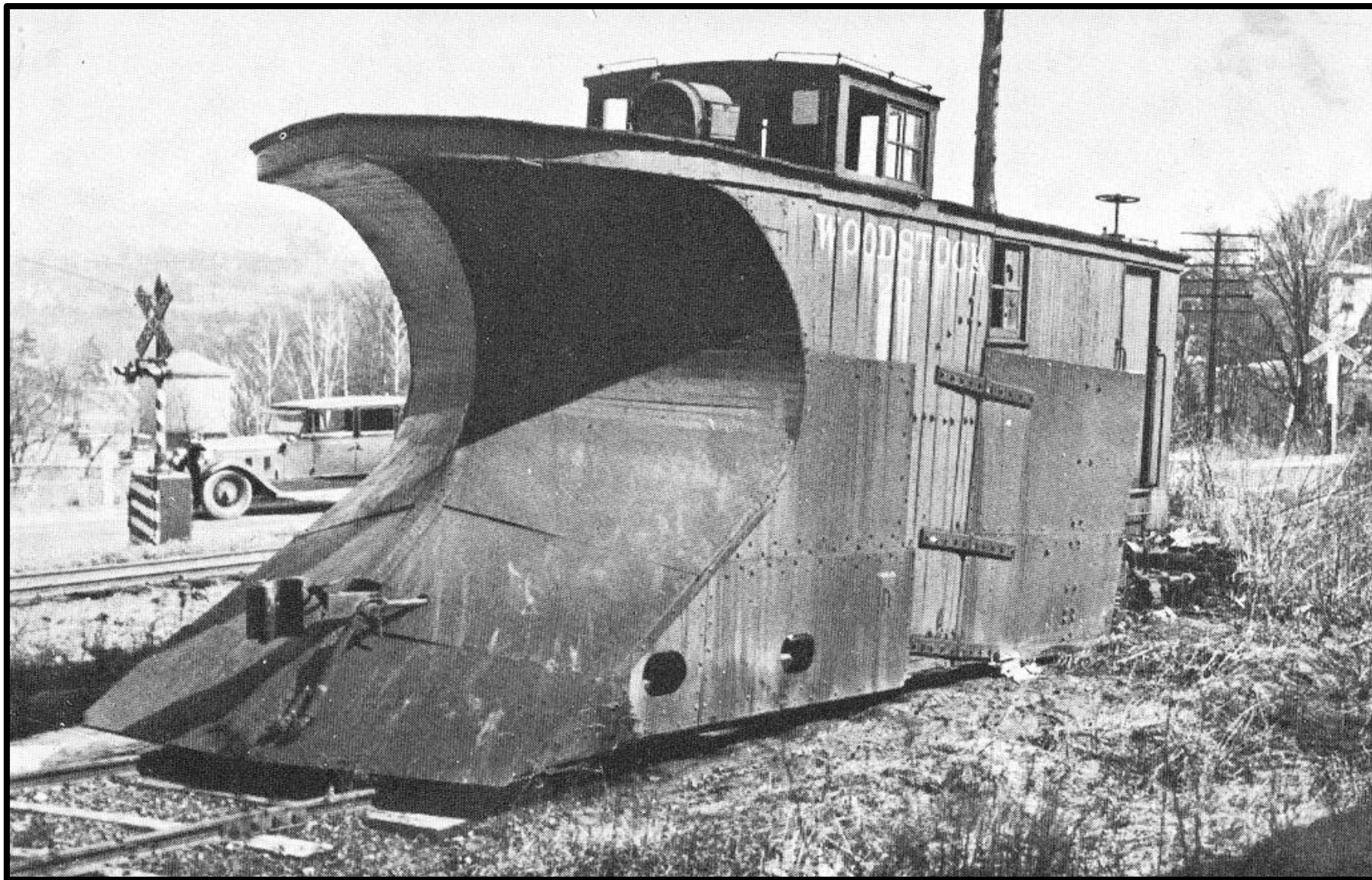
3

2

1

Artwork ©2007 by Otto M. Vondrak

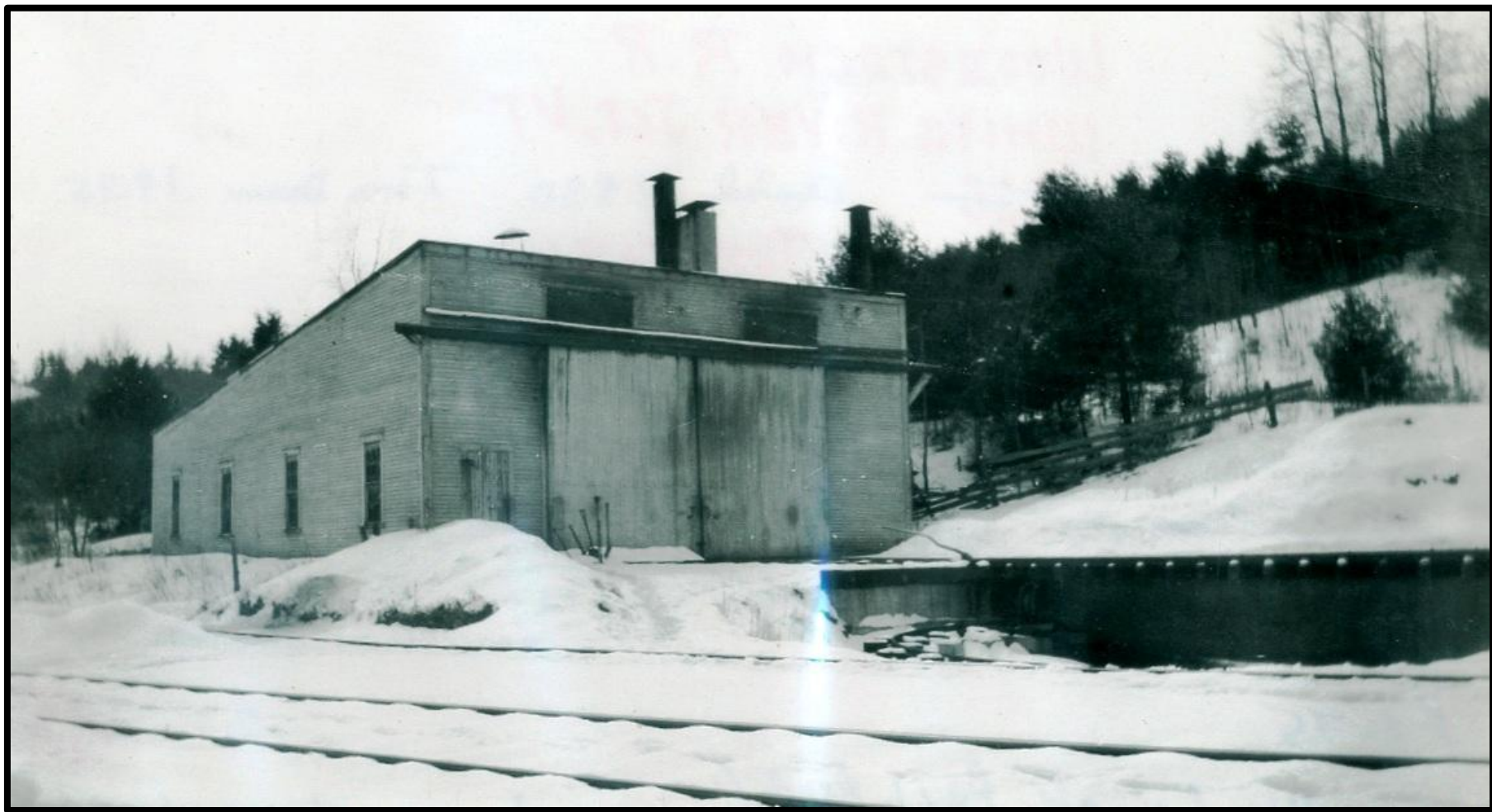
The Woodstock Railway at Quechee, Vermont Circa 1920



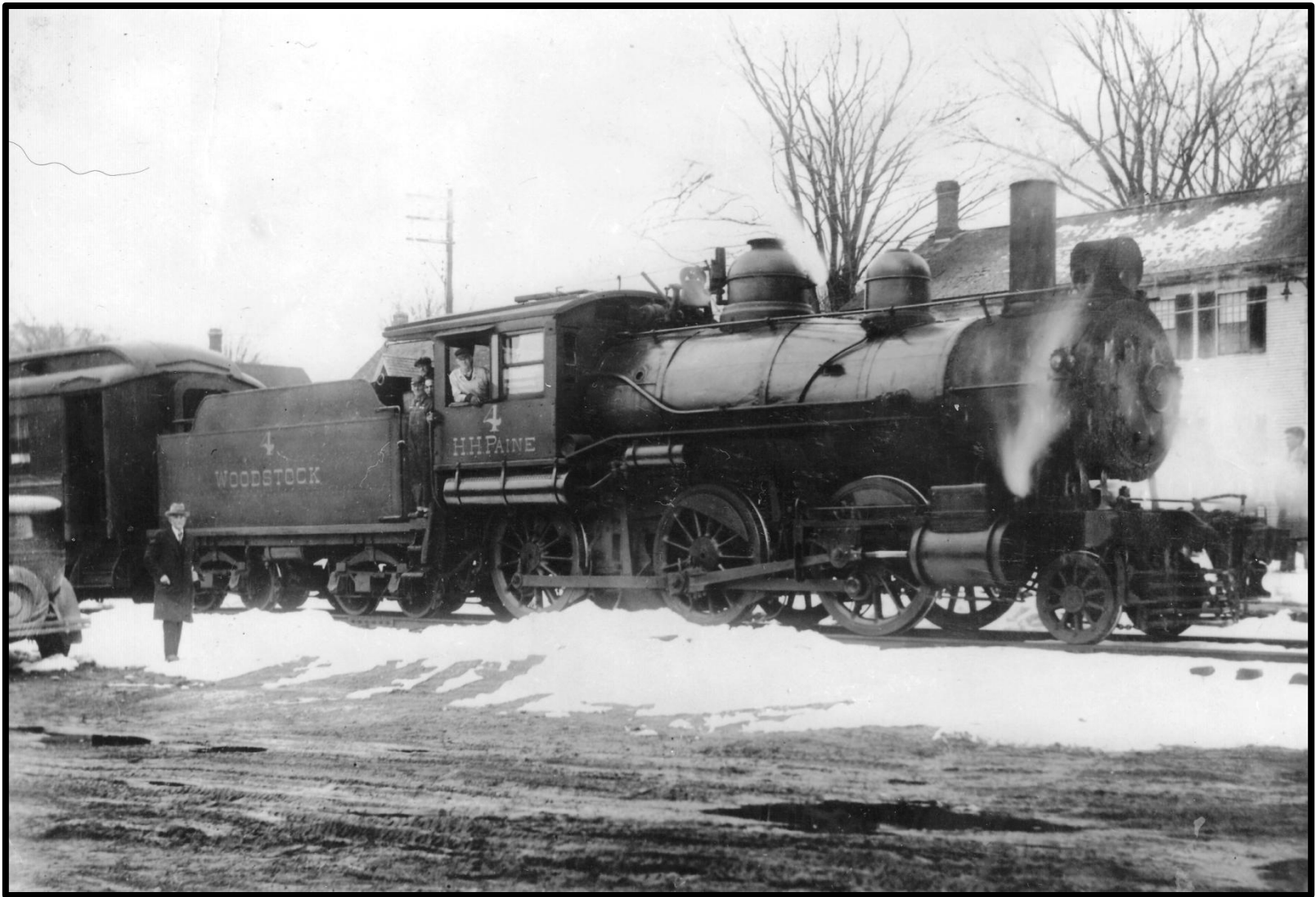
***The Woodstock railway's snow plow
Purchased from the Central Vermont Railroad about 1909***



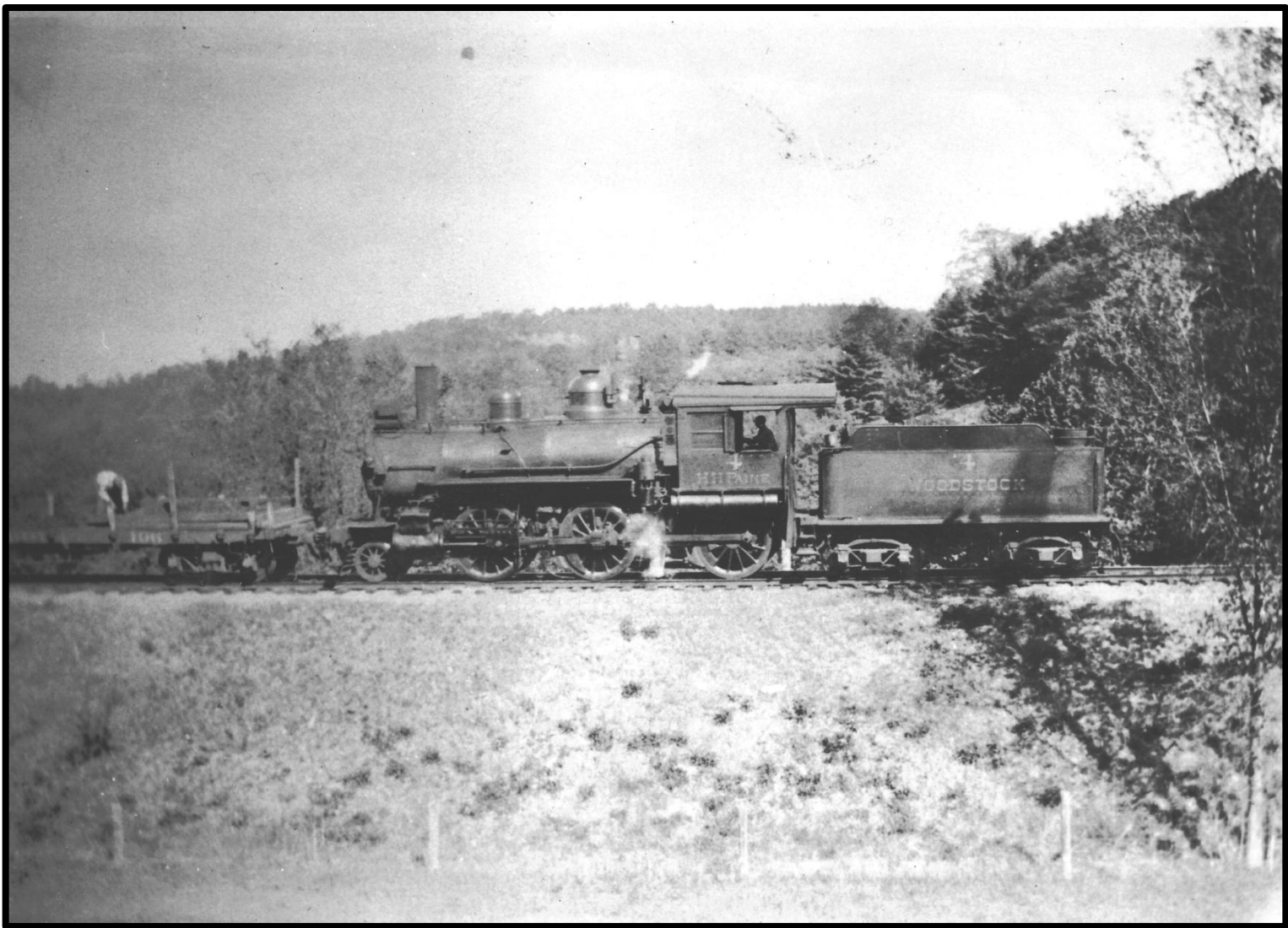
***A section crew heading east out of Woodstock
Circa 1920***



***The two stall engine house at White River Junction
Constructed in 1890 – Razed in 1935***

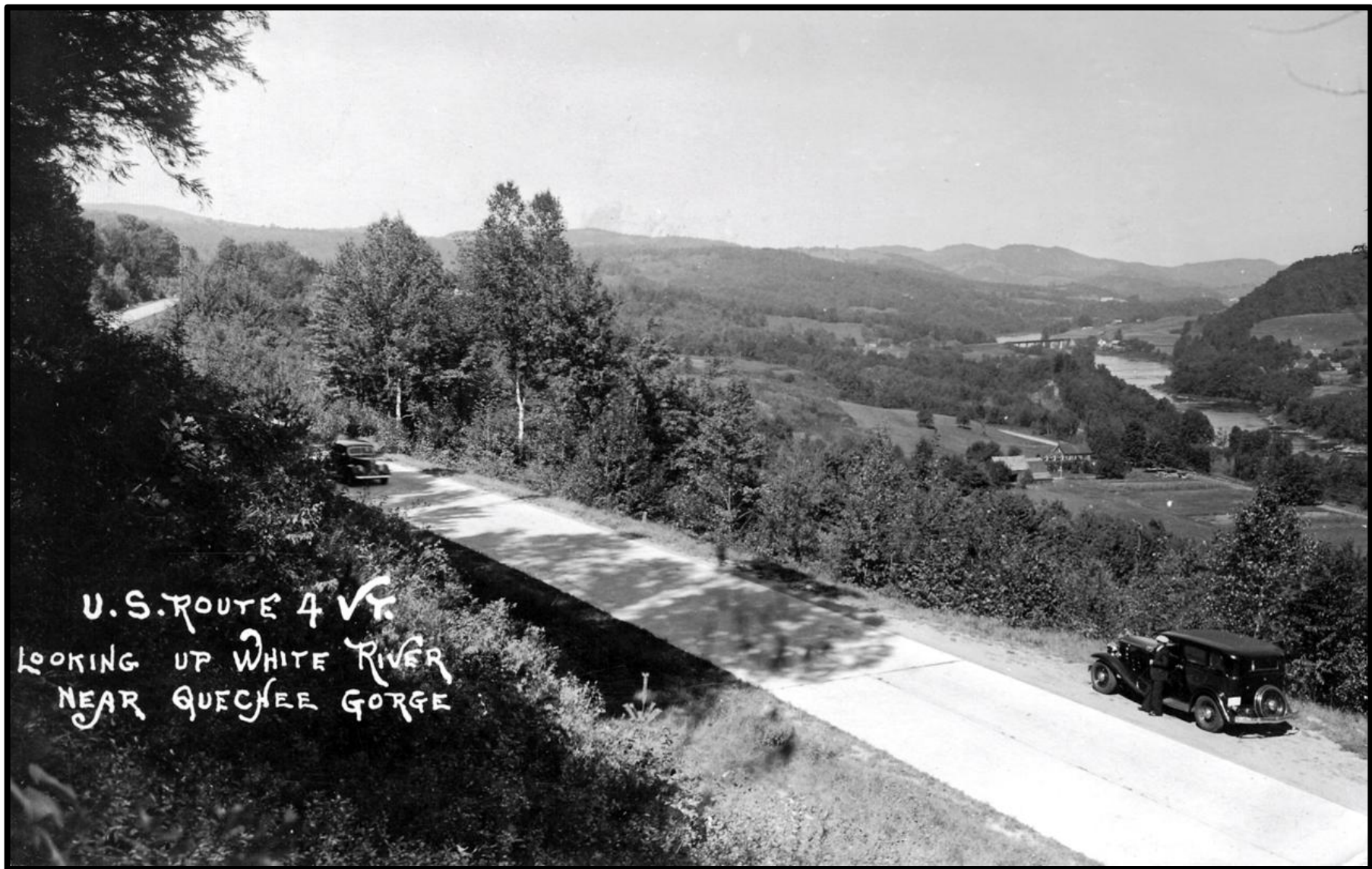


***The Last Run of the Woodstock Railway
Saturday Morning April 15, 1933
The "H. H. Paine" Leaving Woodstock at 11:00 a.m.***



Summer 1933

***The "H. H. Paine" and a work train
Taking up the rails of the Woodstock Railway***

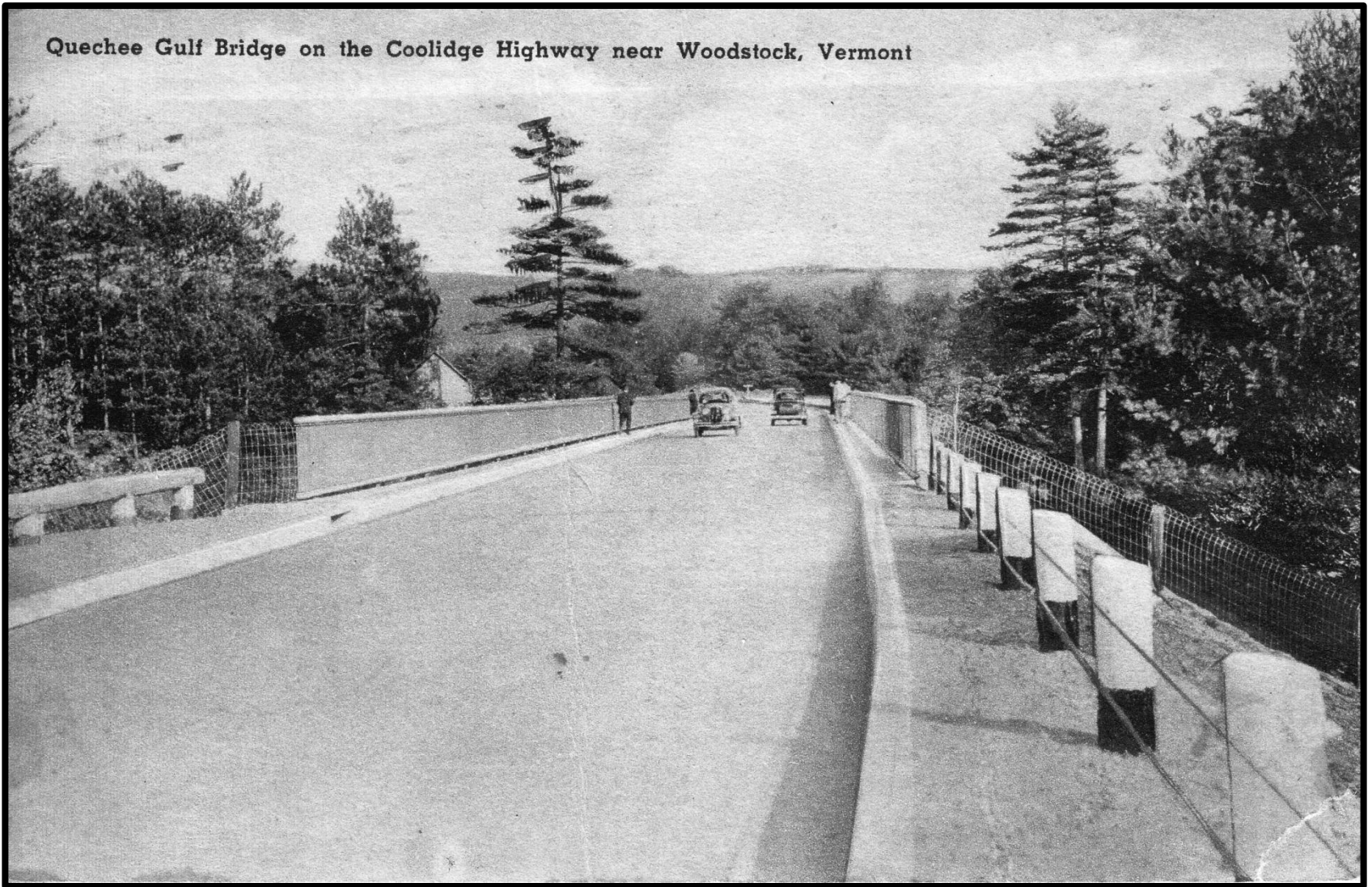


***The New US Route 4
Former Bed of the Woodstock Railway
Circa 1934***

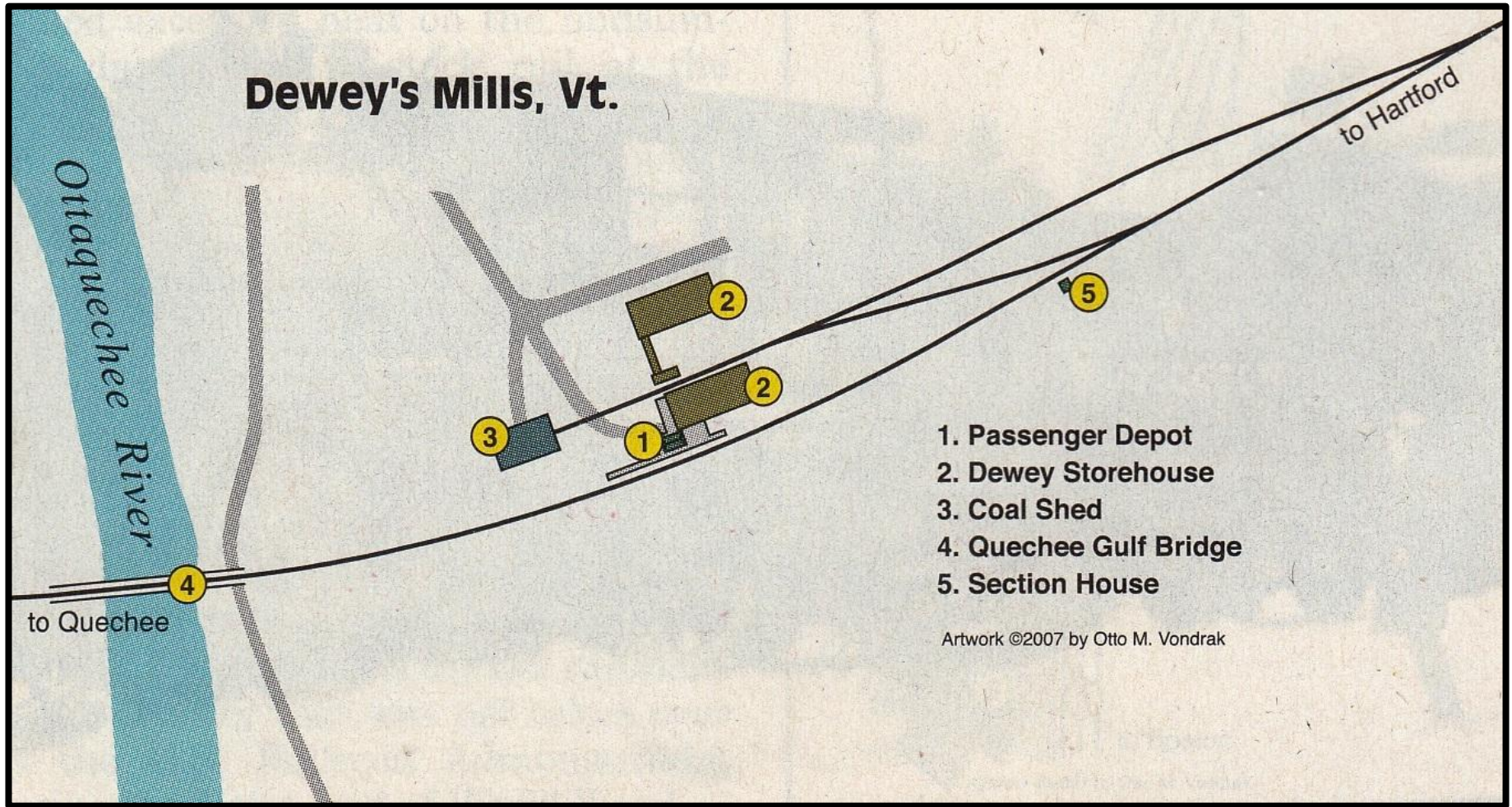


***The “Shallies Hill Cut” looking west
Now US Route 4***

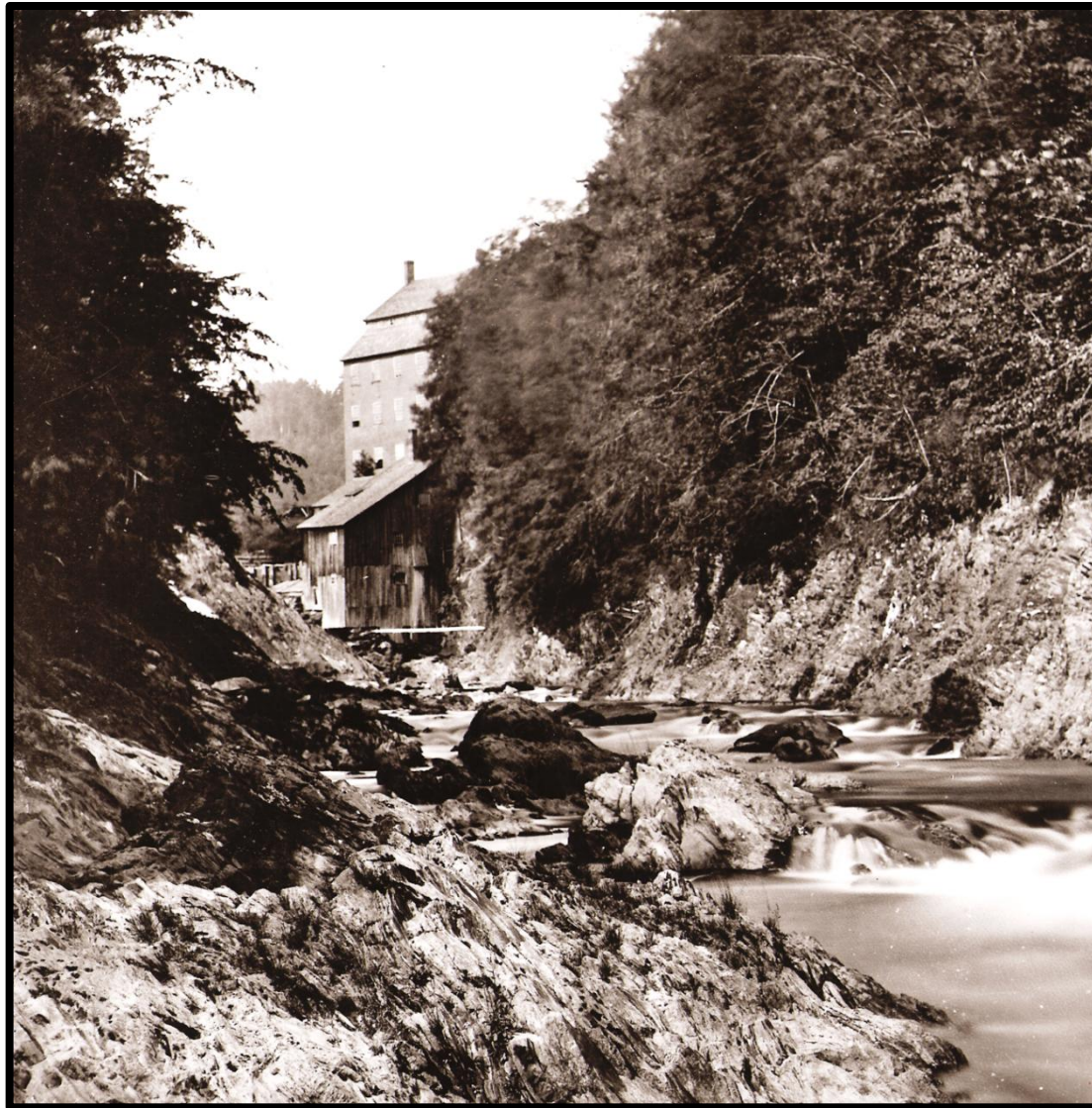
Quechee Gulf Bridge on the Coolidge Highway near Woodstock, Vermont



***The former Woodstock railway Quechee Gorge Bridge
Made into a highway bridge in 1933***



***The Woodstock Railway at Dewey's Mills, Vermont
Circa 1920***



Dewey Mills at Quechee, Vermont
First developed by Albert Galatin Dewey (1805 - 1886) in 1837
Circa 1865



View of the mill complex from the railroad bridge circa 1875



The mill complex circa 1880.

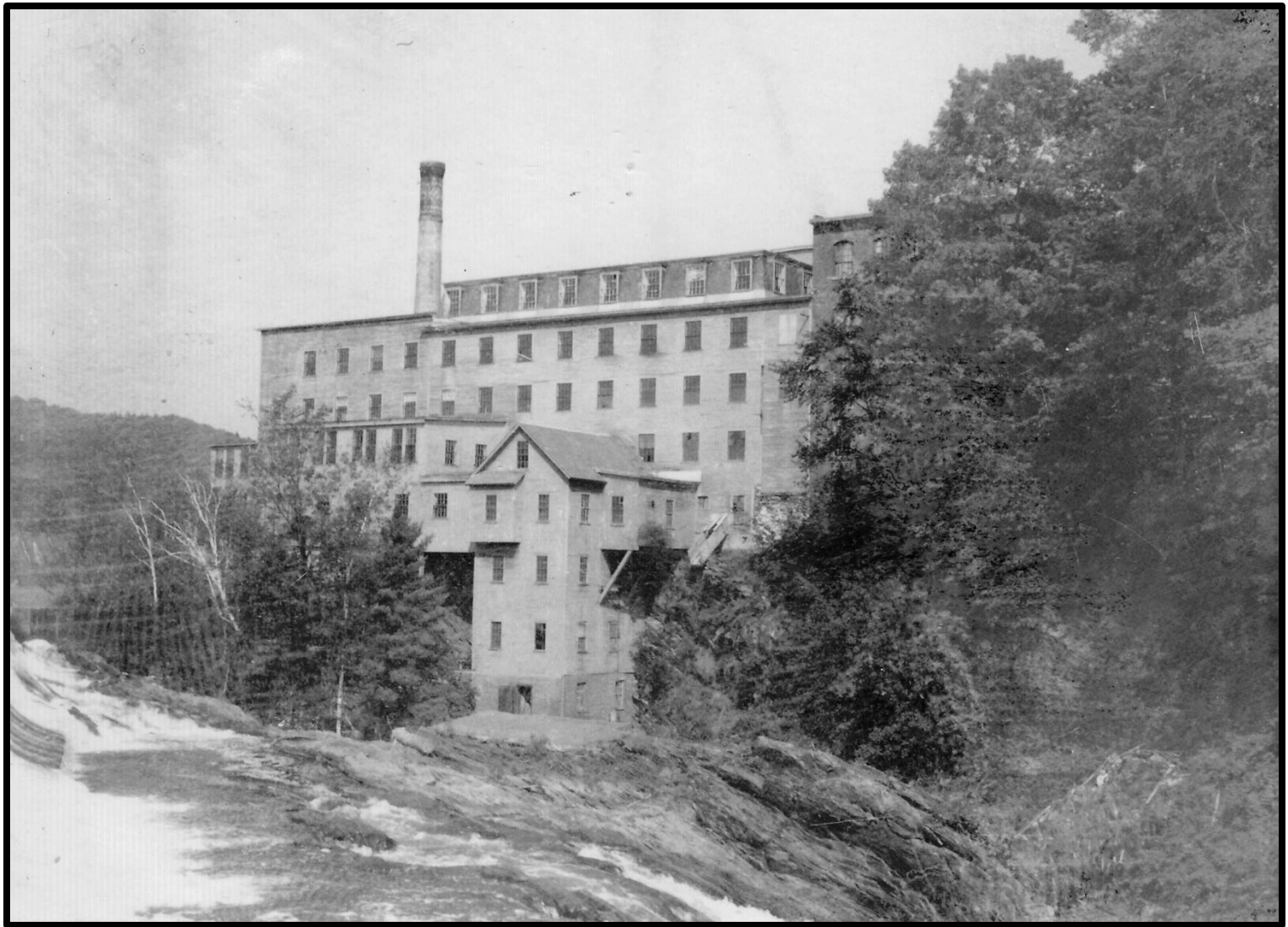
The founder A. G. Dewey is standing in front of the office building at the far right.



***The woolen mill complex looking east.
Circa 1915***



***The woolen mill complex at the head of Quechee Gorge
Circa 1920***



***In 1924 a new 220' long dam was constructed that added 10' of additional head, and flooded 75 additional acres.
This photo was taken in 1962.***



***Dewey's Mills
Looking south circa 1945***



***Dewey's Mills
Looking north circa 1945***



THE DEWEY CORPORATION, QUECHEE GORGE, VERMONT

6259

***Mill ends, fabric store, and restaurant
Constructed in 1947***



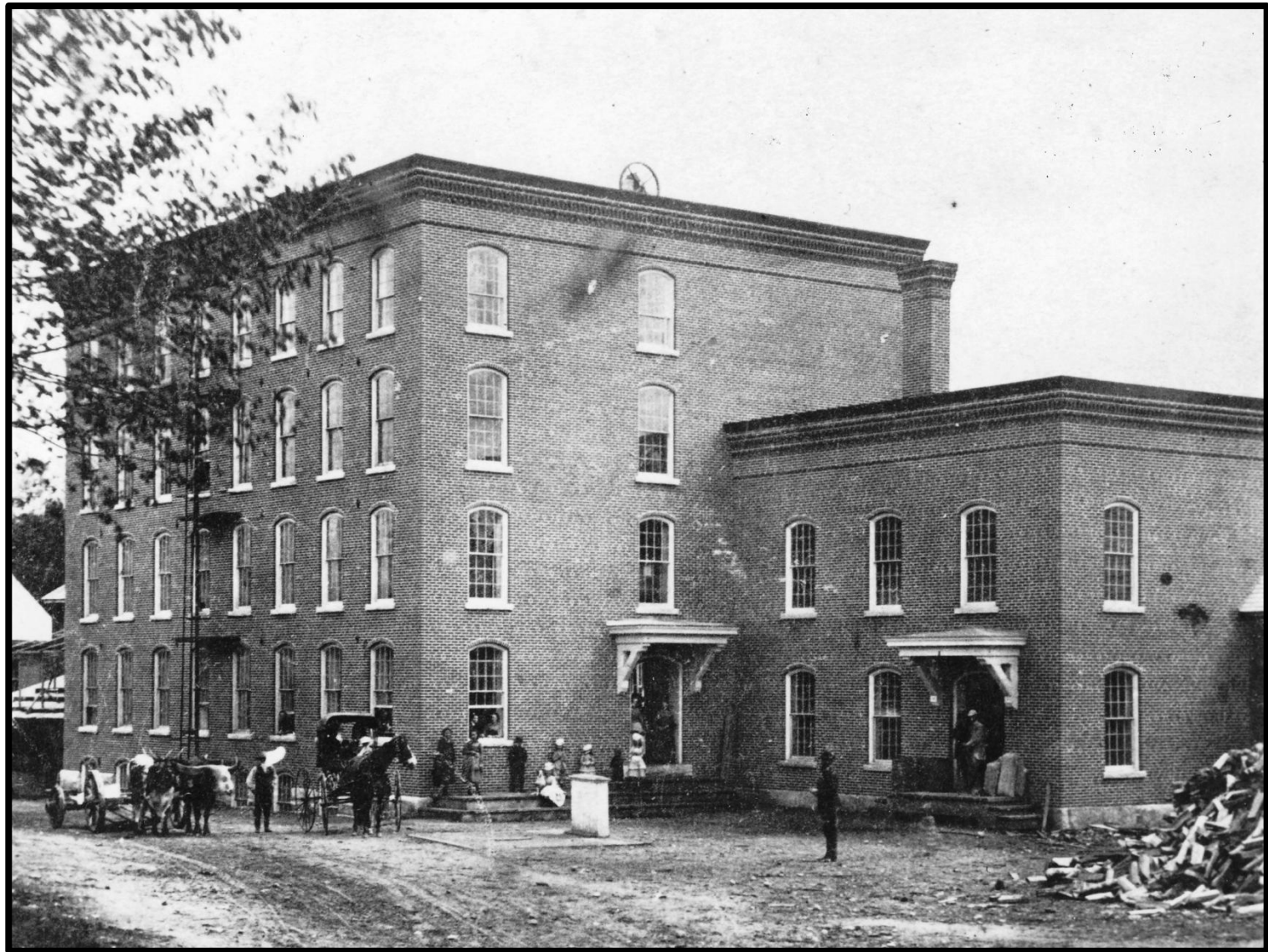
The vacant mill complex being razed in 1962.



The mill had been closed for several years before demolition had started in 1962.



Company worker housing down near the mill pond was also razed in 1962.



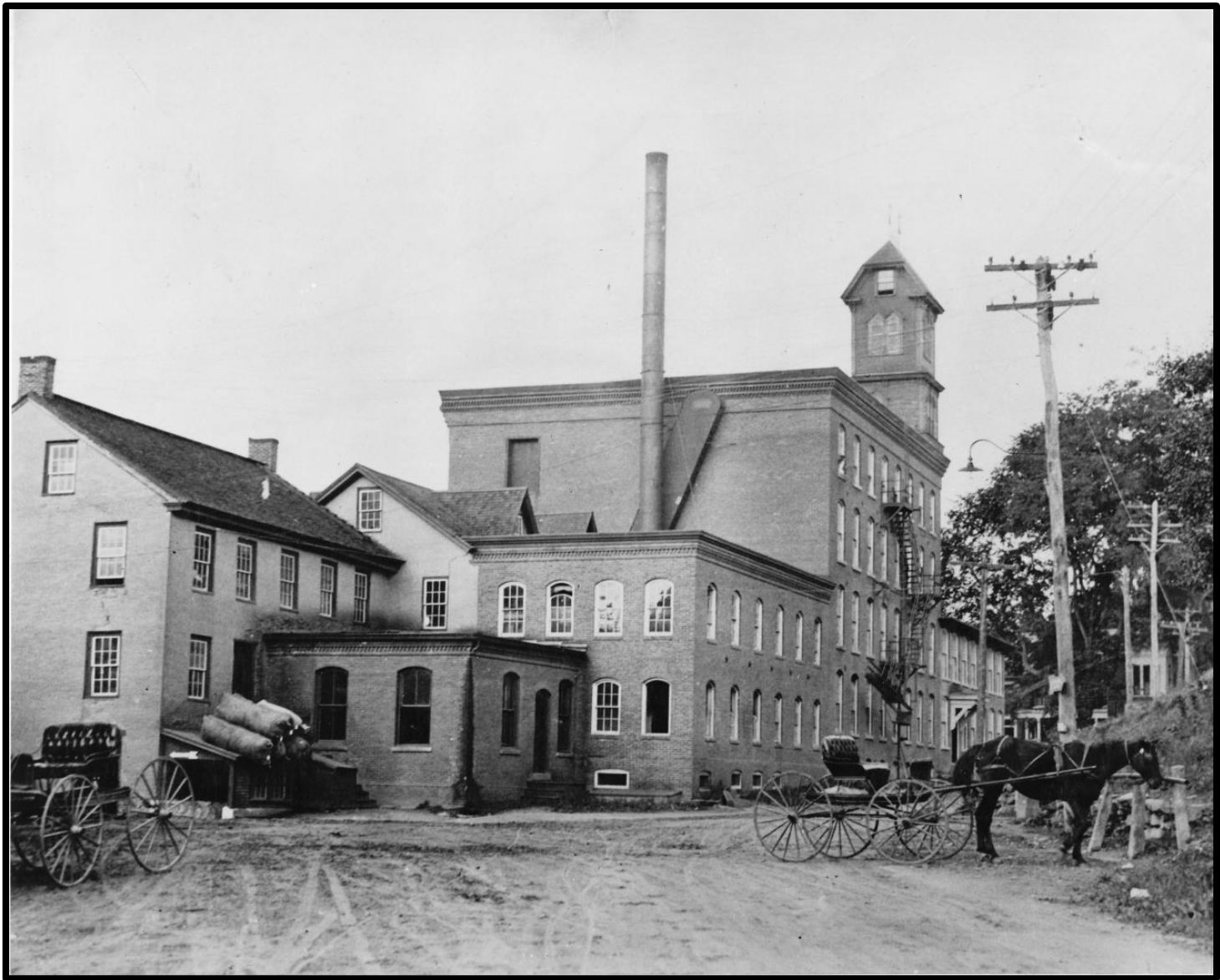
***The J. C. Parker and Company woolen mill, circa 1880.
Quechee, Vermont***



***The J. C. Parker & Company woolen mills and mill pond
Circa 1910***



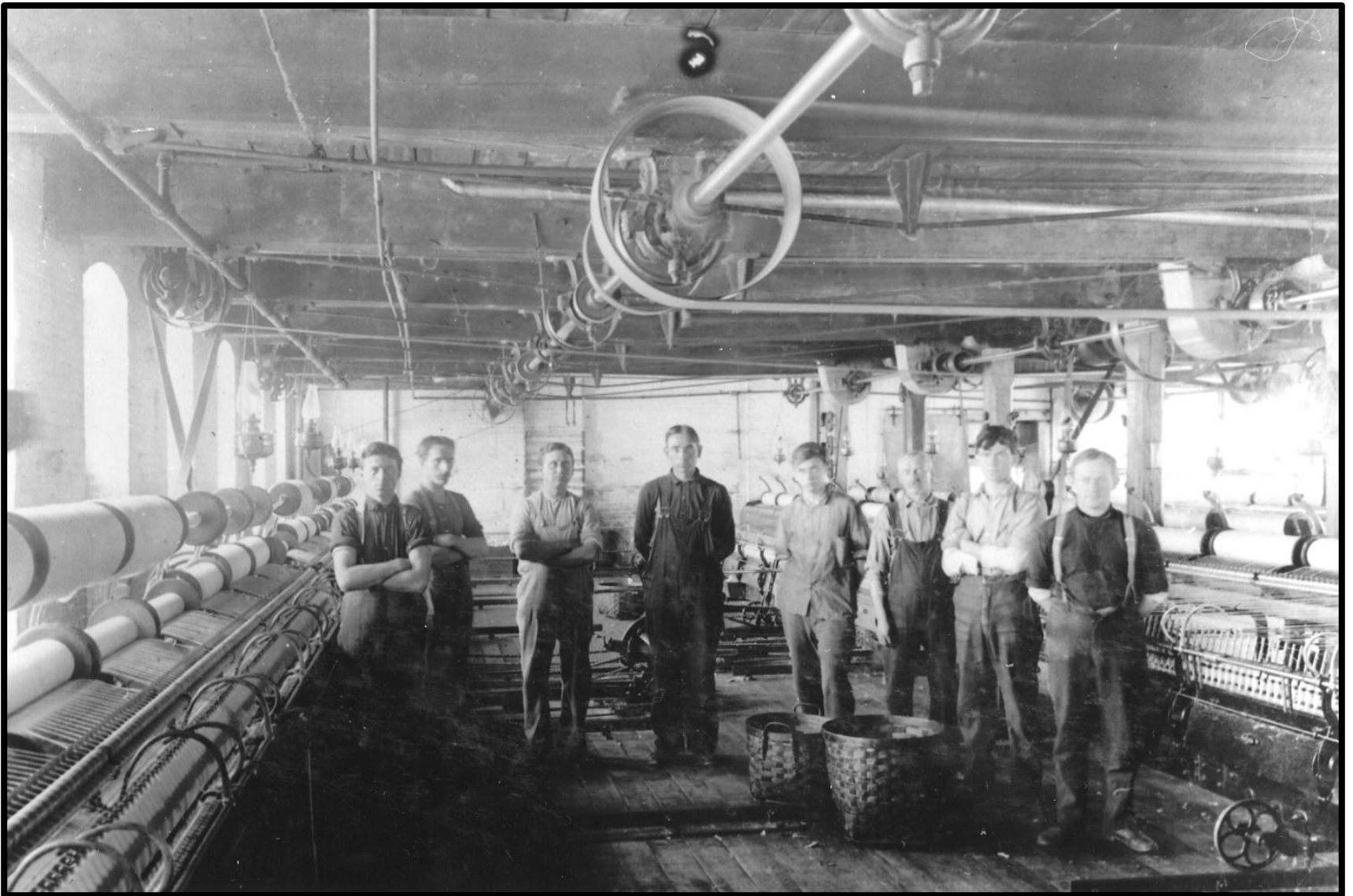
In 1915 Harris, Emery Company expanded the former J. C. Parker Company complex nearly doubling it's size and output.



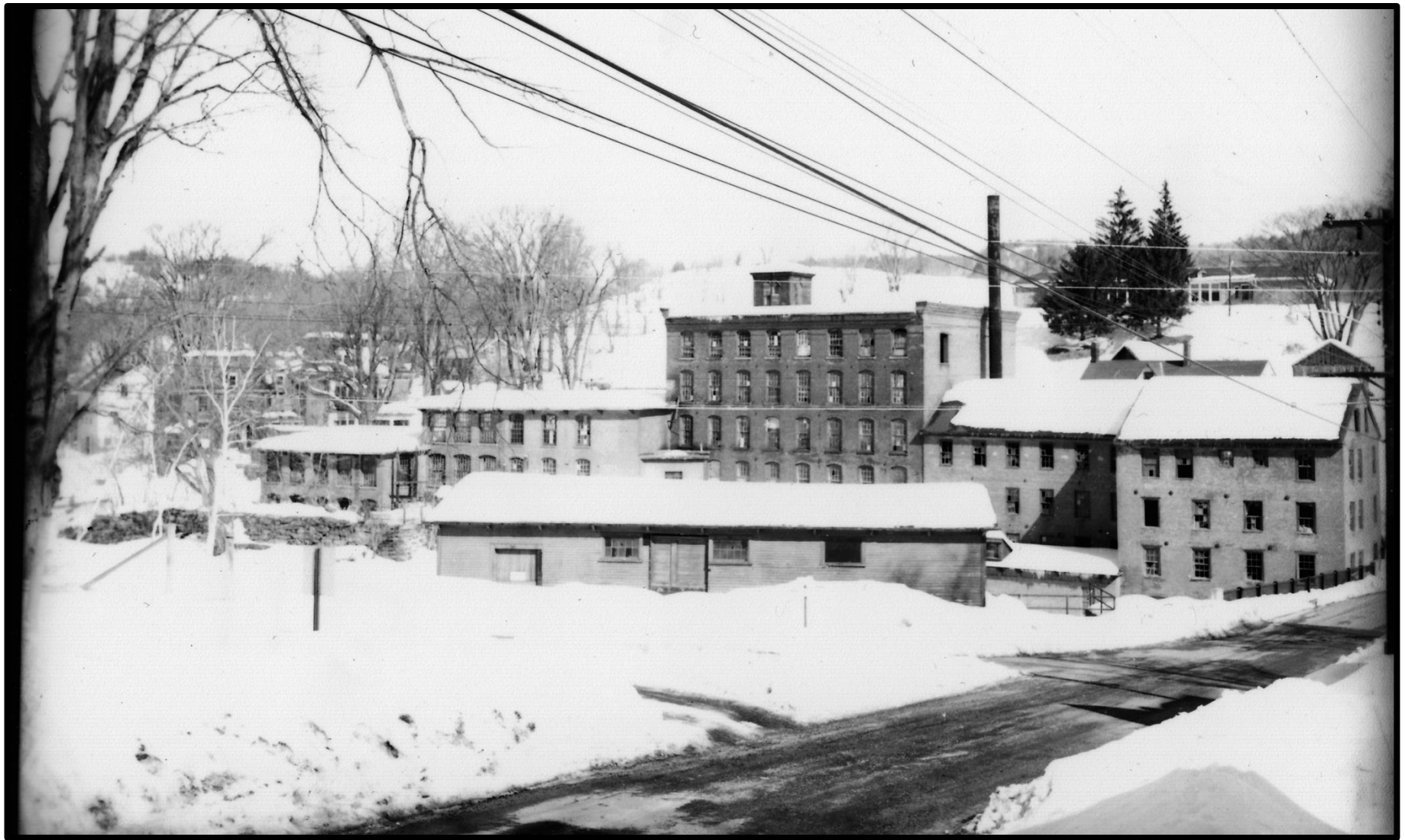
***The mill complex from lower on Main Street
Quechee, Vermont***



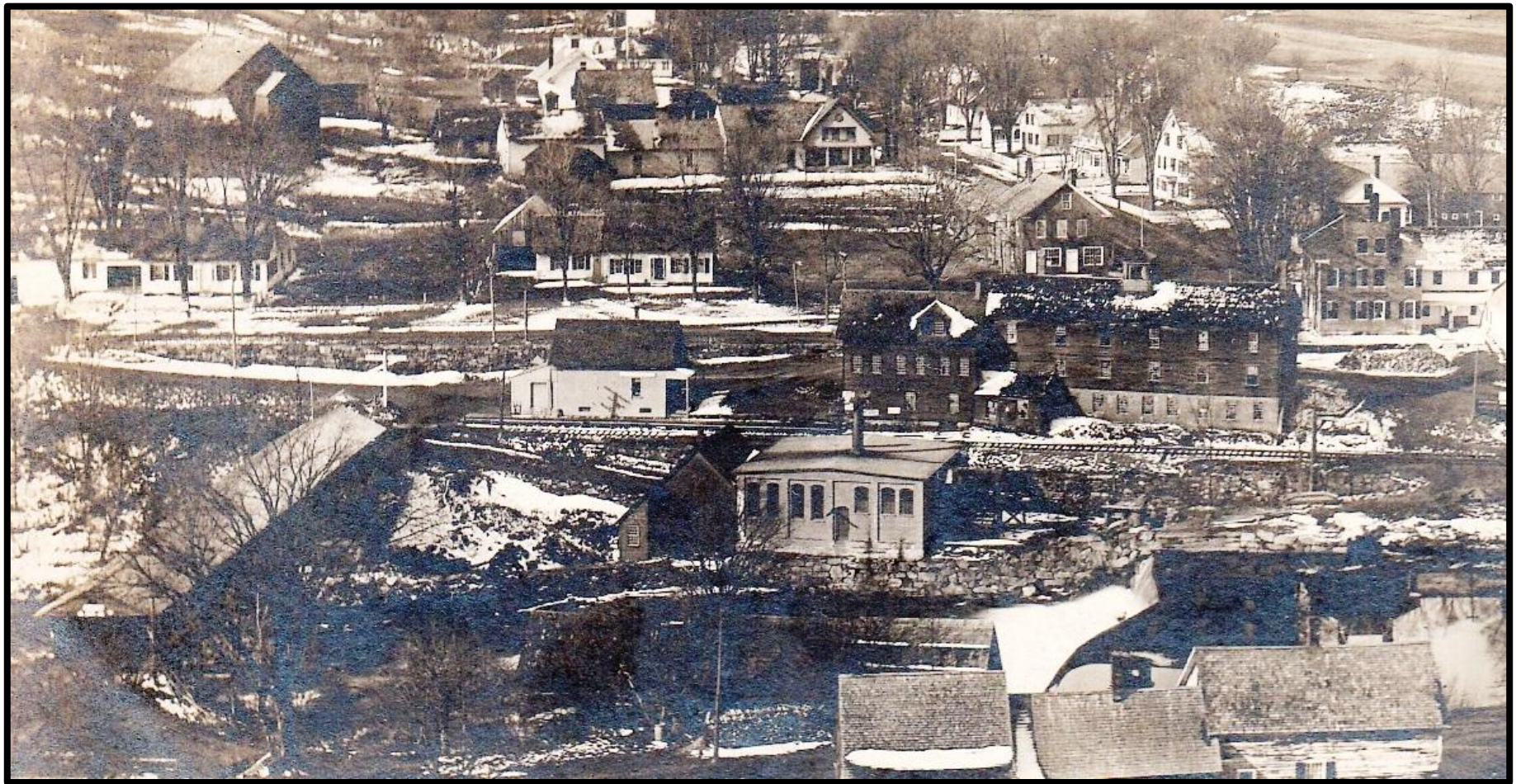
***Women textile workers
Circa 1910***



***Men textile workers
Circa 1910***



***Harris, Emery Company closed the mill in February 1, 1957.
In march 1964 much of the mill complex was razed by
dynamite.***



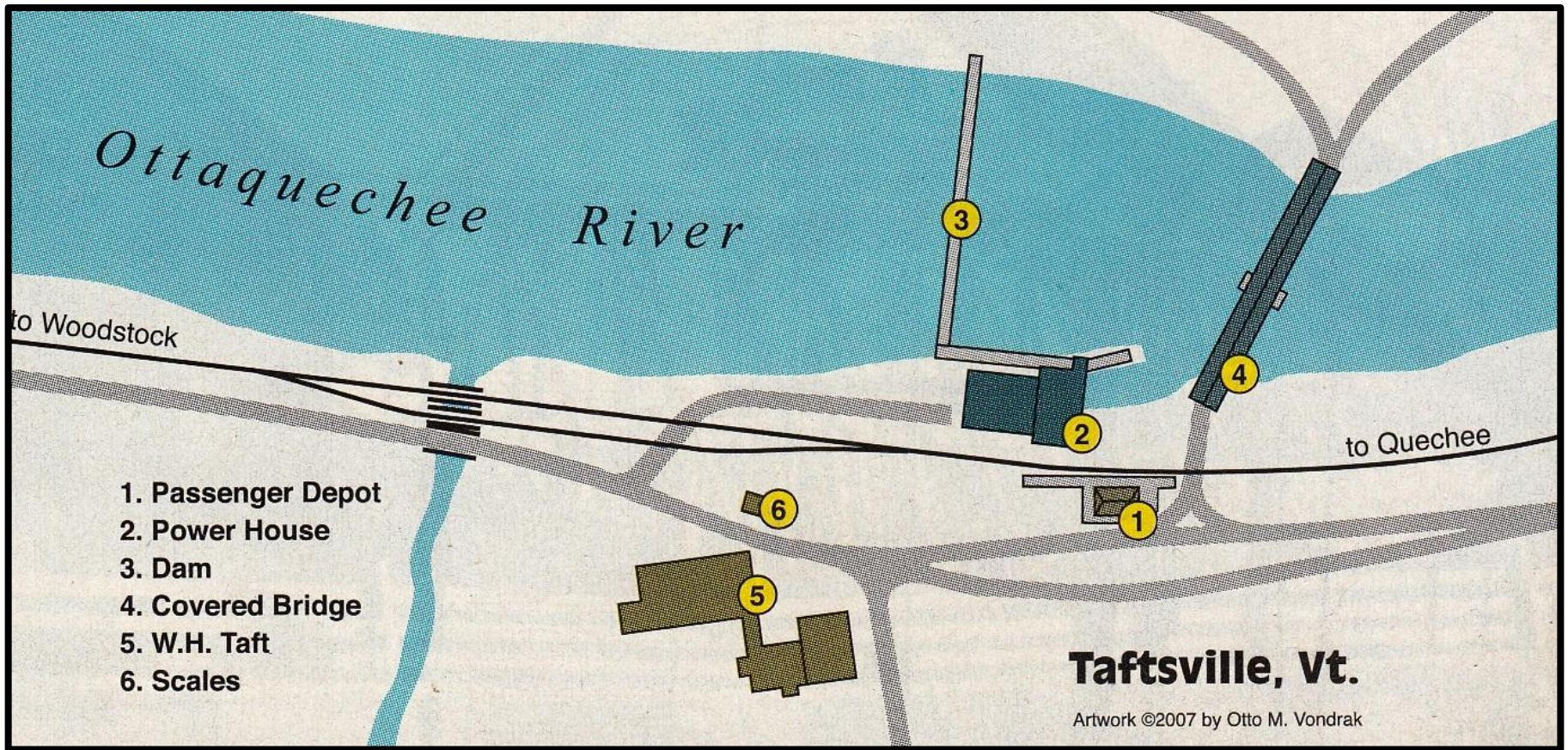
Taftsville, Vermont Looking Southwest Circa 1915

The first dam was constructed in 1793 by Stephen Taft.

At the far left is the 190' long, two-span, covered bridge constructed in 1836 of multiple king and queen post trusses with laminated wooden arch design.

The brick powerhouse in the center was built in 1911 with a 200 KW turbine.

The Woodstock Railway station is shown center left.



***The Woodstock Railway at Taftsville, Vermont
Circa 1920***



***Quechee Gorge and the Ottauguechee River
Looking North
Circa 1965***

THE END